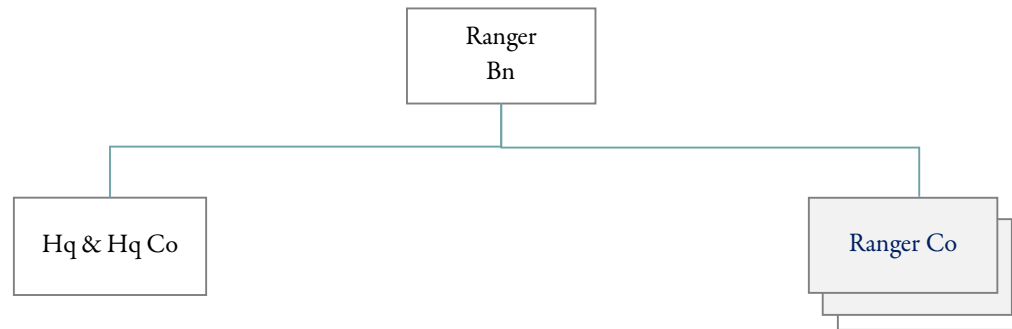


RANGER INFANTRY BATTALION
Designation: _____ Battalion (Ranger), _____ Infantry

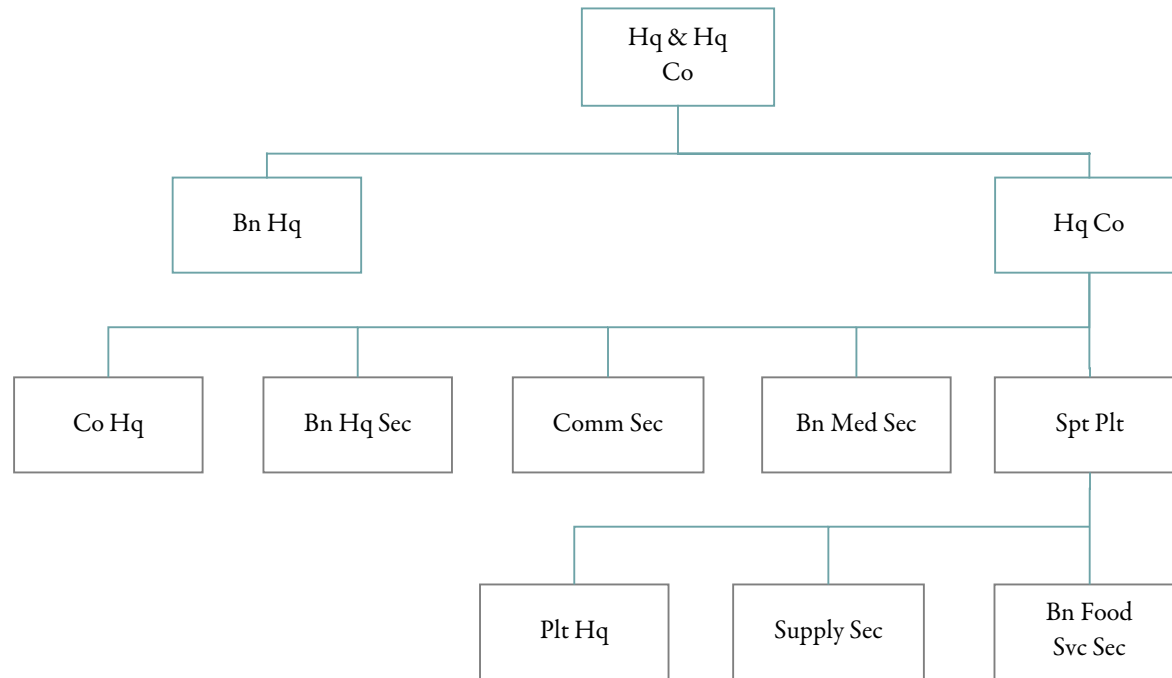


PERSONNEL ALLOWANCES

PARA	DESCRIPTION	GRADE	STRENGTH	REMARKS		
				ASI	1	2
01	HHC RNGR INF BN					
	OFFICERS		14			
	WARRANT OFFICERS		1			
	ENLISTED		36			
	PARA TOTAL		51			
02	3 RANGER COMPANY					
	OFFICERS		21			
	ENLISTED		516			
		PARA TOTAL		537		
	SRC TOTAL		588			

**HEADQUARTERS AND HEADQUARTERS COMPANY
RANGER INFANTRY BATTALION**

Designation: Headquarters _____ Battalion (Ranger), _____ Infantry
Headquarters Company _____ Battalion (Ranger), _____ Infantry



PERSONNEL ALLOWANCES

PARA	DESCRIPTION	GRADE	STRENGTH	REMARKS		
				1	2	3
01	BN HEADQUARTERS					
	BATTALION COMMANDER	LTC	1	11		
	EXECUTIVE OFFICER	MAJ	1	11		
	S3	MAJ	1	11		
	C-E STAFF OFFICER	CPT	1			
	S1	CPT	1			
	S2	CPT	1	39		
	S4	CPT	1			
	S5	CPT	1			
	COMD SERGEANT MAJOR	E-9	1			
	PARA TOTAL		9			
02	COMPANY HEADQUARTERS					
	COMPANY COMMANDER	CPT	1	11		
	FIRST SERGEANT	E-8	1	10		
	SUPPLY SERGEANT	E-6	1			
	UNIT CLERK	E-5	1			
	ARMORER	E-4	1	96		
	PARA TOTAL		5			
03	BATTALION HQ SECTION					
	FIRE SPT COORD	CPT	1			
	S3 AIR	CPT	1			
	ASST S2	LT	1			
	INTELLIGENCE SGT	E-8	1			
	OPERATION SGT	E-8	1			
	A OPERATIONS SERGEANT	E-7	1	08		
	PERSONNEL STAFF NCO	E-7	1	07		
	LIAISON SERGEANT	E-6	1			
	CLERK TYPIST	E-4	2	96		
	SENIOR RADIO OPERATOR	E-4	1	96		
	RADIO OPERATOR	E-3	2	01	96	
	RADIO OPERATOR	E-3	1	96		
	PARA TOTAL		14			
04	COMMUNICATION SECTION					
	COMMUNICATION CHIEF	E-7	1			
	FIELD C-E EQUIP MECH	E-4	1	96		
	SR MESSAGE CLERK	E-4	1	96		
	TAC WIRE OPNS SP	E-3	1	96		
PARA TOTAL		4				
05	BN MEDICAL SECTION					
	GENERAL MEDICAL OFFICER	CPT	1	11	20	
	SR CLINICAL SPECIALIST	E-6	1			
	CLINICAL SPECIALIST	E-5	1			
PARA TOTAL		3				
06	BN SUPPORT PLT HQ					
	PLATOON LEADER	LT	1	25		
07	SUPPLY SECTION					

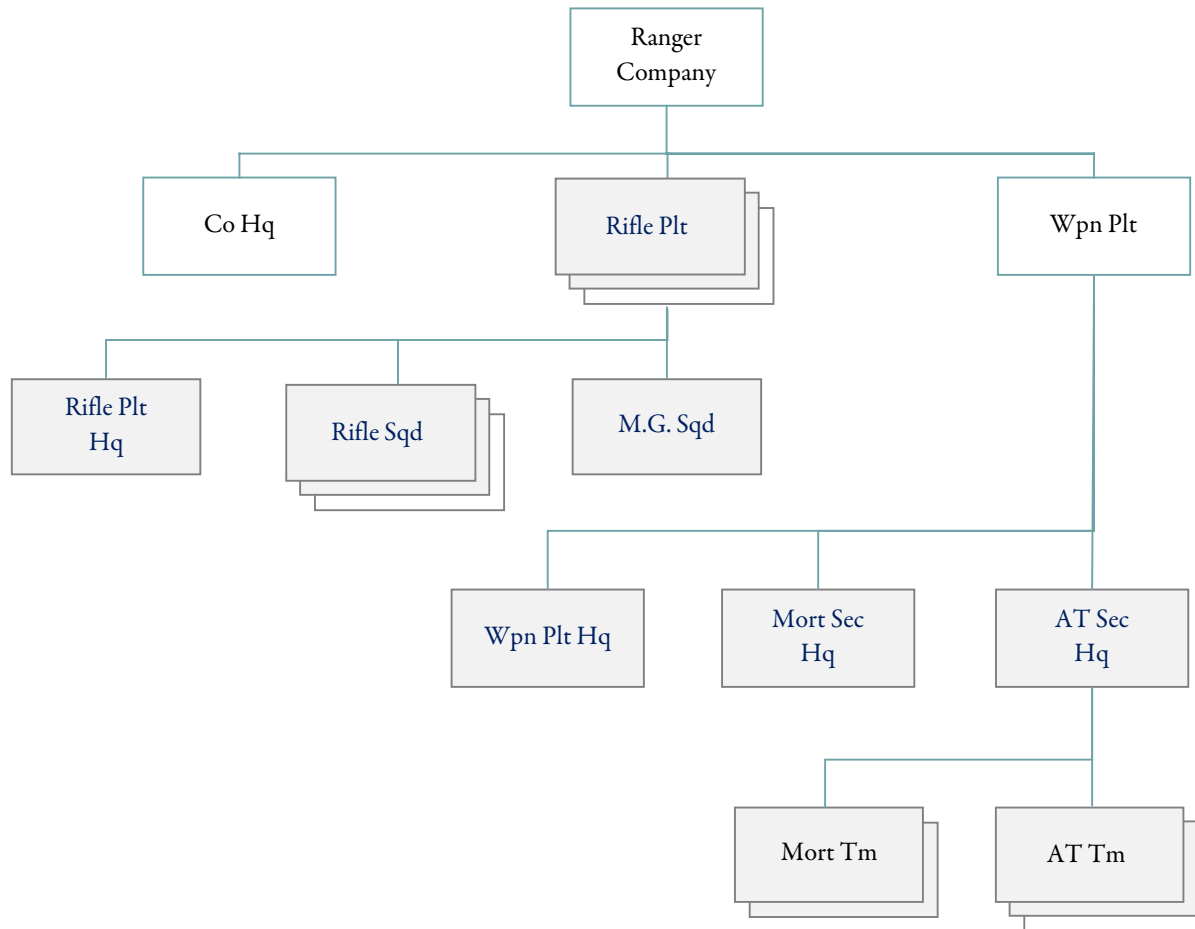
PARA	DESCRIPTION	GRADE	STRENGTH	REMARKS		
				1	2	3
	UNIT SUPPLY TECHNICIAN	WO	1			
	SUPPLY SERGEANT	E-7	1			
	AMMUNITION CHIEF	E-6	1			
	SUPPLY SPECIALIST	E-4	1	96		
	PARA TOTAL		4			
08	BN FOOD SVC SECTION					
	DINING FAC MGR	E-7	1			
	FIRST COOK	E-6	1			
	FIRST COOK	E-5	4			
	COOK	E-4	4	96		
	COOKS HELPER	E-3	1	96		
	PARA TOTAL		11			
	SRC TOTAL		51			
	REMARKS					
01	ALSO LIGHT VEH DVR					
07	ALSO INFO NCO					
08	ALSO EDUC NCO					
10	ALSO CAREER CSLR					
11	ARMED W/PISTOL, AUTO CAL 45					
20	ALSO STAFF OFFICER					
25	ALSO ASST S4					
39	MUST BE PREFIX 5 QUALIFIED					
96	MAY BE E-4 WITH RANGER AND AIRBORNE QUALIFICATION					

EQUIPMENT ALLOWANCE

PARA	DESCRIPTION	LEVEL
01	BN HEADQUARTERS	
	BAYONET-KNIFE W/SCABBARD FOR M16A1 RIFLE	9
	PISTOL CALIBER .45 AUTOMATIC	3
	RIFLE 5.56 MILLIMETER	6
02	COMPANY HEADQUARTERS	
	BAYONET-KNIFE W/SCABBARD FOR M16A1 RIFLE	5
	PISTOL CALIBER .45 AUTOMATIC	1
	RADIO SET AN/PRC-77	1
	RIFLE 5.56 MILLIMETER	4
03	BATTALION HQ SECTION	
	BAYONET-KNIFE W/SCABBARD FOR M16A1 RIFLE	14
	RADIO SET AN/GRC-160	2
	RADIO SET AN/PRC-77	6
	RADIO SET AN/URC-68	1
	RIFLE 5.56 MILLIMETER	14
	TRAILER CARGO ¼ TON 2 WHEEL	2
	TRUCK UTILITY ¼ TON 4 X 4	2
04	COMMUNICATION SECTION	
	BAYONET-KNIFE W/SCABBARD FOR M16A1 RIFLE	4
	RADIO SET AN/PRC-74	3
	RIFLE 5.56 MILLIMETER	4
	SWITCHBOARD TELEPHONE MANUAL SB-22/PT	1
	TELEPHONE SET TA-312/PT	10
05	BN MEDICAL SECTION	
	PISTOL CALIBER .45 AUTOMATIC	1
	RIFLE 5.56 MILLIMETER	2
06	BN SUPPORT PLT HQ	
	BAYONET-KNIFE W/SCABBARD FOR M16A1 RIFLE	1
	RIFLE 5.56 MILLIMETER	1
07	SUPPLY SECTION	
	BAYONET-KNIFE W/SCABBARD FOR M16A1 RIFLE	4
	RIFLE 5.56 MILLIMETER	4
08	BN FOOD SVC SECTION	
	BAYONET-KNIFE W/SCABBARD FOR M16A1 RIFLE	11
	RIFLE 5.56 MILLIMETER	2

RANGER COMPANY, RANGER INFANTRY BATTALION

Designation: Company _____, _____ Battalion (Ranger), _____ Infantry



PERSONNEL ALLOWANCES

PARA	DESCRIPTION	GRADE	STRENGTH	REMARKS		
				1	2	3
01	COMPANY HEADQUARTERS					
	COMPANY COMMANDER	CPT	1	11		
	EXECUTIVE OFFICER	LT	1			
	FIRE SPT COORD	LT	1			
	FIRST SERGEANT	E-8	1	10		
	SUPPLY SERGEANT	E-6	1			
	COMMUNICATION CHIEF	E-6	1			
	RECONNAISSANCE SGT	E-5	1			
	TEAM LEADER	E-5	1	17		
	UNIT CLERK	E-5	1			
	ARMORER	E-4	1	96		
	FIELD C-E EQUIP MECH	E-4	1	96		
	RIFLEMAN	E-4	1	17	96	
	RADIO OPERATOR	E-3	2	96		
	RADIO OPERATOR	E-3	1	96		
	PARA TOTAL		15			
02	3 RIFLE PLT HQ					
	PLATOON LEADER	LT	3			
	PLATOON SERGEANT	E-7	3			
	COMPANY AIDMAN	E-5	3	11		
	RADIO OPERATOR	E-3	3	96		
	RADIO OPERATOR	E-3	3	96		
	PARA TOTAL		15			
03	9 RIFLE SQUADS					
	SQUAD LEADER	E-6	9			
	TEAM LEADER	E-5	18			
	AUTO RIFLEMAN	E-4	18	96		
	GRENADIER	E-4	18	96		
	SR RIFLEMAN	E-4	18	95	96	
	RIFLEMAN	E-3	18	96		
	PARA TOTAL		99			
04	3 MACHINEGUN SQD					
	SQUAD LEADER	E-6	3			
	MACHINE GUNNER	E-4	9	11	96	
	ASST MACHINE GUNNER	E-3	9	11	96	
	AMMUNITION BEARER	E-3	9	96		
	PARA TOTAL		30			
05	WEAPONS PLATOON HQ					
	PLATOON LEADER	LT	1			
	RADIO OPERATOR	E-3	1	96		
	PARA TOTAL		2			
06	MORTAR SECTION HQ					
	SECTION LEADER	E-6	1			
	FIRE DIR COMPUTER	E-5	1			
	PARA TOTAL		2			
07	2 MORTAR TEAMS					

PARA	DESCRIPTION	GRADE	STRENGTH	REMARKS		
				1	2	3
	GUNNER	E-4	2	11	96	
	ASST GUNNER	E-3	2	11	96	
	AMMUNITION BEARER	E-3	2	96		
	PARA TOTAL		6			
08	ANTITANK SECTION HQ					
	SECTION LEADER	E-6	1			
	PARA TOTAL		1			
09	3 ANTITANK TEAMS					
	GUNNER	E-4	3	11	96	
	ASST GUNNER	E-3	3	11	96	
	AMMUNITION BEARER	E-3	3	96		
	PARA TOTAL		9			
	REMARKS					
10	ALSO CAREER CSLR					
11	ARMED W/PISTOL, AUTO CAL 45					
17	ARMED W/SNIPER RIFLE					
95	MINIMUM ONE EM PER FIRE TEAM DEMOLITION QUALIFIED					
96	MAY BE E-4 WITH RANGER AND AIRBORNE QUALIFICATION					

EQUIPMENT ALLOWANCE		
PARA	DESCRIPTION	LEVEL
01	COMPANY HEADQUARTERS	
	BAYONET-KNIFE W/SCABBARD FOR M16A1 RIFLE	15
	LAUNCHER GRENADE 40 MILLIMETER SGLE SHOT RIFLE MED DECHBLE	1
	NIGHT VISION SIGHT INDIVIDUAL SERVEP WEAPON AN/PVS-2	1
	PISTOL CALIBER .45 AUTOMATIC	4
	RADIO SET AN/PRC-41	1
	RADIO SET AN/PRC-74	2
	RADIO SET AN/PRC-77	3
	RIFLE 5.56 MILLIMETER	12
	RIFLE 7.62 MILLIMETER SNIPER	2
02	3 RIFLE PLT HQ	
	BAYONET-KNIFE W/SCABBARD FOR M16A1 RIFLE	12
	PISTOL CALIBER .45 AUTOMATIC	3
	RADIO SET AN/PRC-74	3
	RADIO SET AN/PRC-77	3
03	9 RIFLE SQUADS	
	BAYONET-KNIFE W/SCABBARD FOR M16A1 RIFLE	99
	BIPOD RIFLE 5.56 MILLIMETER W/CARRYING CASE F/M16A1 RIFLE	18
	LAUNCHER GRENADE 40 MILLIMETER SGLE SHOT RIFLE MED DECHBLE	18
	NIGHT VISION SIGHT INDIVIDUAL SERVERP WEAPON AN/PVS-2	36
04	RIFLE 5.56 MILLIMETER	99
	3 MACHINEGUN SQD	
	BAYONET-KNIFE W/SCABBARD FOR M16A1 RIFLE	30
	MACHINE GUN 7.62 MILLIMETER LIGHT FLEXIBLE	9
	MOUNT TRIPOD MACHINE GUN 7.62 MILLIMETER	9
	NIGHT VISION SIGHT CREW SERVED WEAPON AN/TVS-2	9
	PISTOL CALIBER .45 AUTOMATIC	18
RIFLE 5.56 MILLIMETER	12	
05	WEAPONS PLATOON HQ	
	BAYONET-KNIFE W/SCABBARD FOR M16A1 RIFLE	2
	RADIO SET AN/PRC-77	1
	RIFLE 5.56 MILLIMETER	2
06	MORTAR SECTION HQ	
	BAYONET-KNIFE W/SCABBARD FOR M16A1 RIFLE	2
	LAUNCHER GRENADE 40 MILLIMETER SGLE SHOT RIFLE MTD DTCHBLE	1
	RADIO SET AN/PRC-77	1
07	RIFLE 5.56 MILLIMETER	2
	2 MORTAR TEAMS	
	BAYONET-KNIFE W/SCABBARD FOR M16A1 RIFLE	6
	MORTAR 60 MILLIMETER ON MOUNT	2
	PISTOL CALIBER .45 AUTOMATIC	4
08	RIFLE 5.56 MILLIMETER	2
	ANTITANK SECTION HQ	
	BAYONET-KNIFE W/SCABBARD FOR M16A1 RIFLE	1
09	RIFLE 5.56 MILLIMETER	1
	3 ANTITANK TEAMS	
	BAYONET-KNIFE W/SCABBARD FOR M16A1 RIFLE	9

PARA	DESCRIPTION	LEVEL
	PISTOL CALIBER .45 AUTOMATIC	6
	RIFLE 5.56 MILLIMETER	3
	RIFLE RECOILLESS 90 MILLIMETER	3