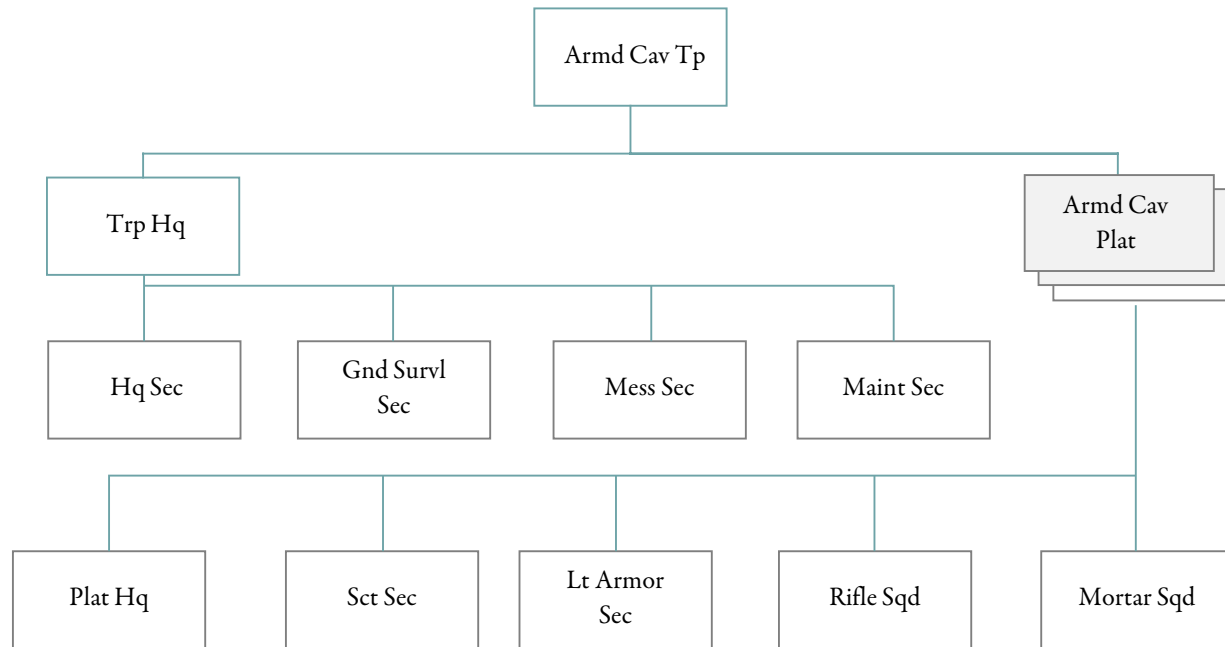


**ARMORED CAVALRY TROOP
SEPARATE LIGHT INFANTRY BRIGADE**

Designation: Troop ____, ____, Cavalry



PERSONNEL ALLOWANCES

PARA	DESCRIPTION	GRADE	STRENGTH	REMARKS		
				1	2	3
01	HEADQUARTERS SECTION					
	TROOP COMMANDER	CPT	1	11		
	EXECUTIVE OFFICER	LT	1	28		
	FIRST SERGEANT	E-8	1			
	SUPPLY SERGEANT	E-6	1			
	COMM CHIEF	E-5	1			
	TROOP CLERK	E-5	1			
	SCOUT DRIVER	E-4	1			
	SR FLD SWBD OP	E-4	1	01	52	
	ARMORER	E-4	1			
	LT VEHICLE DRIVER	E-3	3	41		
	PARA TOTAL		12			
02	GROUND SURVL SECTION					
	SECTION LEADER	E-6	1			
	SR RADAR OPERATOR	E-5	2			
	RADAR OPERATOR	E-4	2	01	41	
	PARA TOTAL		5			
03	MESS SECTION					
	MESS STEWARD	E-7	1			
	FIRST COOK	E-6	1			
	FIRST COOK	E-5	2			
	COOK	E-4	1	01		
	PARA TOTAL		5			
04	MAINTENANCE SECTION					
	MOTOR SERGEANT	E-7	1			
	SR RCVY VEHICLE OP	E-5	1	11	16	
	SR TANK TURRET MECH	E-5	1			
	SR TRACK VEHICLE MECH	E-5	1			
	FIELD RADIO MECHANIC	E-4	1			
	TANK TURRET MECHANIC	E-4	1			
	RECOVERY VEHICLE OP	E-4	1	11	16	41
	TRACK VEH MECHANIC	E-4	4			
	EQUIP RECORDS CLERK	E-4	1	01	41	
	TRACK VEH MECH HLPR	E-3	1	01		
	PARA TOTAL		13			
05	3 ARMD CAV PLAT HQ					
	PLATOON LEADER	LT	3			
	SCOUT DRIVER	E-4	3	41		
	PARA TOTAL		6			
06	3 SCOUT SECTIONS					
	SECTION LEADER	E-6	3			
	SQUAD LEADER	E-6	3			
	ASST SQUAD LEADER	E-5	6			
	SCOUT DRIVER	E-4	12	46		
	SCOUT OBSERVER	E-3	12			
	PARA TOTAL		36			

PARA	DESCRIPTION	GRADE	STRENGTH	REMARKS		
				1	2	3
07	3 LT ARMOR SECTIONS					
	PLATOON SERGEANT	E-7	3	11	43	48
	ARAAV COMMANDER	E-6	3	11	48	
	GUNNER	E-5	6	11	48	
	ARAAV DRIVER	E-5	6	11	16	48
	LOADER	E-3	6	11	48	
	PARA TOTAL		24			
08	3 RIFLE SQUADS					
	SQUAD LEADER	E-6	3			
	TEAM LEADER	E-5	6			
	AUTO RIFLEMAN	E-4	6			
	GRENADIER	E-4	6			
	RIFLEMAN	E-3	9	44		
	PARA TOTAL		30			
09	3 MORTAR SQUADS					
	SQUAD LEADER	E-5	3			
	MORTAR GUNNER	E-4	3	11		
	A MORTAR GUNNER	E-3	3			
	AMMUNITION BEARER	E-3	9			
	LT VEHICLE DRIVER	E-3	3	41		
	PARA TOTAL		15			
	SRC TOTAL		146			
	REMARKS					
01	ALSO LIGHT VEHICLE DRIVER					
11	ARMED WITH PISTOL AUTOMATIC CAL .45					
16	ARMED WITH SUBMACHINE GUN CAL .45					
28	ALSO MOTOR OFFICER					
41	ALSO RADIO OPERATOR					
43	ALSO ARAAV COMMANDER					
44	REMARK 01 APPLIES TO 3 EM					
46	REMARK 01 APPLIES TO 6 EM					
48	MUST HAVE COMPLETED TRANSITIONAL TRAINING ON THE SHILLELAGH WEAPONS SYSTEM					
52	ALSO WIREMAN					

EQUIPMENT ALLOWANCE		
PARA	DESCRIPTION	LEVEL
01	HEADQUARTERS SECTION	
	BAYONET-KNIFE W/SCABBARD FOR M16A1 RIFLE	12
	LAUNCHER GRENADE M203 FOR XM16E1 RIFLE	1
	MACHINE GUN 7.62 MILLIMETER LIGHT FLEXIBLE	1
	MOUNT MACHINE GUN PEDESTAL 7.62MM M60 ON TRUCK M151	1
	MOUNT TRIPOD MACHINE GUN 7.62 MILLIMETER	1
	NIGHT VISION SIGHT INDIVIDUAL SERVEP WEAPONS AN/PVS-2	4
	PISTOL CALIBER .45 AUTOMATIC	1
	RADIO SET AN/VRC-46 MOUNTED IN TRUCK ¾ TON CARGO	1
	RADIO SET AN/VRC-47 MOUNTED IN TRUCK ¼ TON	2
	RADIO SET CONTROL GROUP AN/GRA-39	2
	RIFLE 5.56 MILLIMETER	11
	SWITCHBOARD TELEPHONE MANUAL SB-22/PT	1
	TELEPHONE SET TA-312/PT	3
	TRAILER CARGO ¾ TON 2 WHEEL	1
	TRUCK CARGO ¾ TON 4 X 4	1
	TRUCK CARGO 2½ TON 6 X 6	2
	TRUCK UTILITY ¼ TON 4 X 4	2
02	GROUND SURVL SECTION	
	BAYONET-KNIFE W/SCABBARD FOR M16A1 RIFLE	5
	LAUNCHER GRENADE M203 FOR XM16A1 RIFLE	2
	RADAR SET AB/PPS-5	2
	RADIO SET AN/GRC-160 MTD IN TRUCK UTILITY ¼ TON	2
	RIFLE 5.56 MILLIMETER	5
	TRAILER CARGO ¼ TON 2 WHEEL	2
	TRUCK UTILITY ¼ TON 4 X 4	2
03	MESS SECTION	
	BAYONET-KNIFE W/SCABBARD FOR M16A1 RIFLE	5
	RIFLE 5.56 MILLIMETER	5
	TRAILER TANK WATER 400 GALLON 1½ TON 2 WHEEL	1
	TRUCK CARGO 2½ TON 6 X 6	1
04	MAINTENANCE SECTION	
	BAYONET-KNIFE W/SCABBARD FOR M16A1 RIFLE	13
	NIGHT VISION SIGHT CREW SERVED WEAPONS AN/TVS-2	1
	PISTOL CALIBER .45 AUTOMATIC	2
	RADIO SET AN/VRC-46 MOUNTED IN RECOVERY VEH FT LIGHT ARMORED	1
	RADIO SET AN/VRC-64 MOUNTED IN TRUCK ¾ TON CARGO	1
	RADIO SET CONTROL GROUP AN/GRA-39	1
	RECOVERY VEHICLE FULL TRACKED LIGHT ARMOR	1
	RIFLE 5.56 MILLIMETER	11
	SUBMACHINE GUN CAL .45	2
	TRAILER CARGO ¾ TON 2 WHEEL	2
	TRUCK CARGO ¾ TON 4 X 4	1
	TRUCK CARGO ¾ TON 4 X 4 W/WINCH	1
05	3 ARMD CAV PLAT HQ	
	BAYONET-KNIFE W/SCABBARD FOR M16A1 RIFLE	6
	RADIO SET AN/VRC-47 MOUNTED IN TRUCK ¼ TON	3
	RADIO SET CONTROL GROUP AN/GRA-39	3

PARA	DESCRIPTION	LEVEL
	RIFLE 5.56 MILLIMETER	6
	TRUCK UTILITY ¼ TON 4 X 4	3
06	3 SCOUT SECTIONS	
	BAYONET-KNIFE W/SCABBARD FOR M16A1 RIFLE	36
	LAUNCHER GRENADE M203 FOR XM16E1	12
	MACHINE GUN 7.62 MILLIMETER LIGHT FLEXIBLE	12
	MOUNT MACHINE GUN PEDESTAL 7.62MM M60 ON TRUCK M151	12
	MOUNT TRIPOD MACHINE GUN 7.62 MILLIMETER	12
	NIGHT VISION SIGHT INDIVIDUAL SERVEP WEAPON AN/PVS-2	12
	RADIO SET AN/GRC-160 MTD IN TRUCK UTILITY ¼ TON	6
	RADIO SET AN/VRC-46 MOUNTED IN TRUCK ¼ TON	6
	RIFLE 5.56 MILLIMETER	36
	TRUCK UTILITY ¼ TON 4 X 4	12
07	3 LT ARMOR SECTIONS	
	ARMORED RECONNAISSANCE AIRBORNE ASSAULT VEHICLE	6
	BAYONET-KNIFE W/SCABBARD FOR M16A1 RIFLE	24
	LAUNCHER GRENADE M203 FOR XM16E1 RIFLE	6
	NIGHT VISION SIGHT INDIVIDUAL SERVEP WEAPON AN/PVS-2	6
	PISTOL CALIBER .45 AUTOMATIC	24
	RADIO SET AN/VRC-12 MOUNTED IN ARMD RECON ABN ASSAULT VEHICLE	3
	RADIO SET AN/VRC-64 MOUNTED IN ARMD RECON ABN ASSAULT VEHICLE	3
	RIFLE 5.56 MILLIMETER	6
	SUBMACHINE GUN CALIBER .45	6
08	3 RIFLE SQUADS	
	BAYONET-KNIFE W/SCABBARD FOR M16A1 RIFLE	30
	DEMOLITION SET EXPLOSIVE INITIATING NON ELECTRICAL	3
	LAUNCHER GRENADE M203 FOR XM16E1 RIFLE	6
	MACHINE GUN 7.62 MILLIMETER LIGHT FLEXIBLE	6
	MOUNT TRIPOD MACHINE GUN 7.62 MILLIMETER	6
	NIGHT VISION SIGHT INDIVIDUAL SERVEP WEAPON AN/PVS-2	6
	RADIO SET AN/PRC-77	3
	RADIO SET AN/VRC-64 MOUNTED IN TRUCK ¾ TON CARGO	3
	RIFLE 5.56 MILLIMETER	30
	TRUCK CARGO ¾ TON 4 X 4	3
	BIPOD RIFLE 5.56 MILLIMETER W/CARRYING CASE FOR M16A1 RIFLE	6
09	3 MORTAR SQUADS	
	BAYONET-KNIFE W/SCABBARD FOR M16A1 RIFLE	15
	MORTAR 81 MILLIMETER ON MOUNT	3
	PISTOL CALIBER .45 AUTOMATIC	3
	RADIO SET AN/GRC-160 MTD IN TRUCK UTILITY ¼ TON	3
	RIFLE 5.56 MILLIMETER	12
	TRAILER CARGO ¼ TON 2 WHEEL	3
	TRUCK UTILITY ¼ TON 4 X 4	3