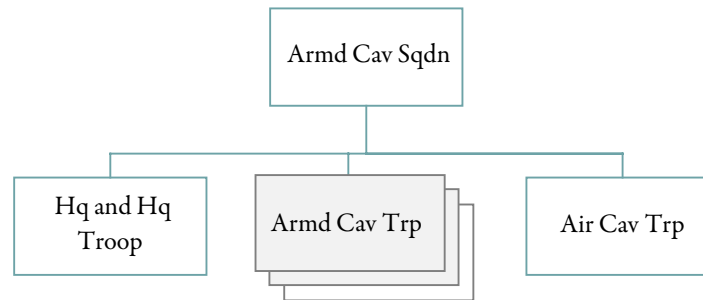


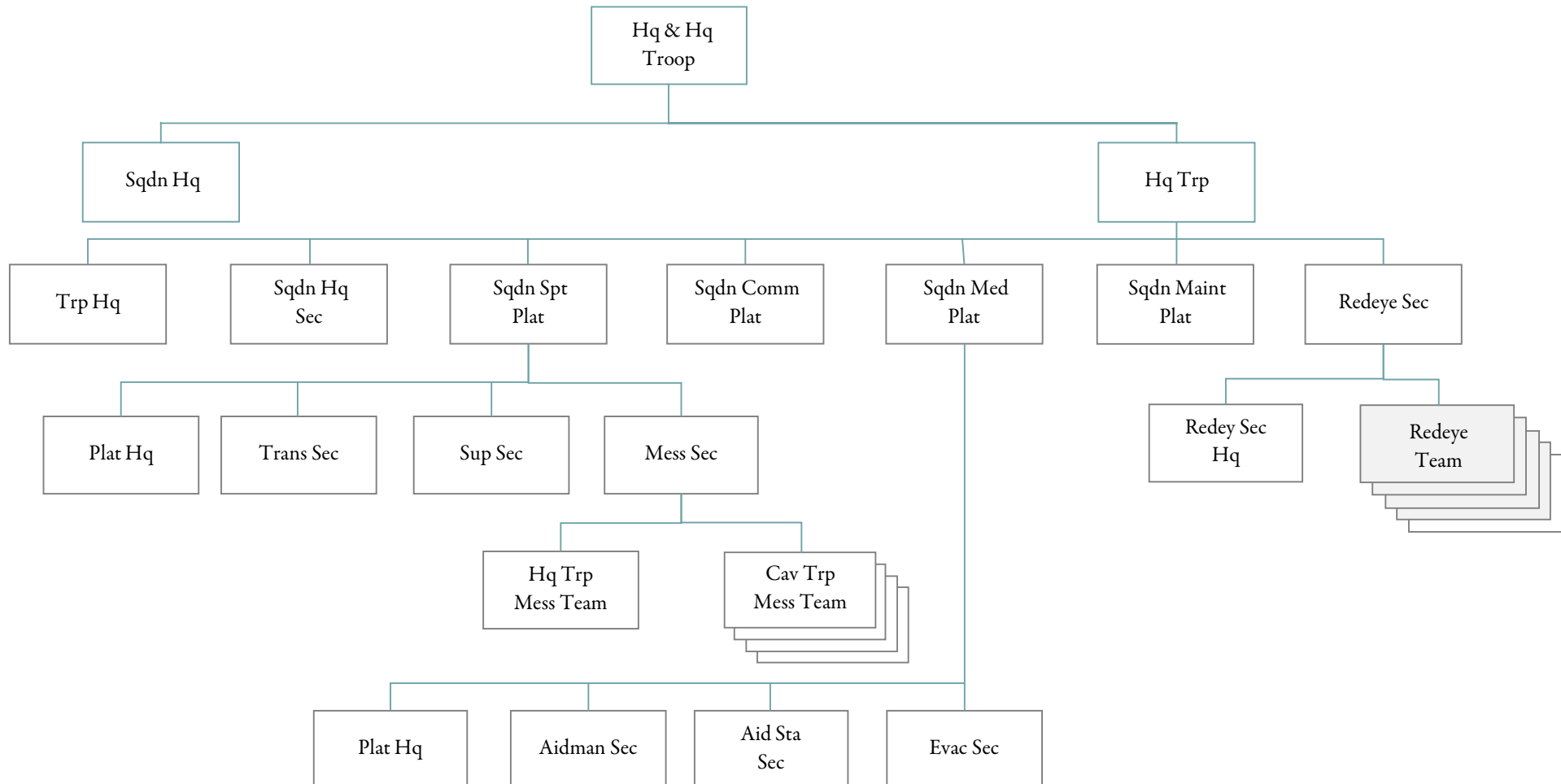
ARMORED CAVALRY SQUADRON, ARMORED DIVISION
OR
ARMORED CAVALRY SQUADRON, INFANTRY DIVISION (MECHANIZED)
Designation: ____ Squadron, ____ Cavalry



PERSONNEL ALLOWANCES

PARA	DESCRIPTION	GRADE	STRENGTH	REMARKS		
				1	2	3
01	HQ HQ TROOP					
	OFFICERS		18			
	WARRANT OFFICERS		2			
	ENLISTED		184			
	PARA TOTAL		204			
02	3 ARMORED CAV TROOP					
	OFFICERS		15			
	WARRANT OFFICERS					
	ENLISTED		468			
	PARA TOTAL		483			
03	AIR CAVALRY TROOP					
	OFFICERS		14			
	WARRANT OFFICERS		31			
	ENLISTED		121			
	PARA TOTAL		166			
	SRC TOTAL		853			

**HEADQUARTERS AND HEADQUARTERS TROOP
ARMORED CAVALRY SQUADRON, ARMORED DIVISION**
OR
**HEADQUARTERS AND HEADQUARTERS TROOP
ARMORED CAVALRY SQUADRON, INFANTRY DIVISION (MECHANIZED)**
Designation: Headquarters, ____ Squadron, ____ Cavalry
Headquarters Troop, ____ Squadron, ____ Cavalry



PERSONNEL ALLOWANCES

PARA	DESCRIPTION	GRADE	STRENGTH	REMARKS		
				1	2	3
01	SQUADRON HEADQUARTERS					
	SQUADRON CMD	LTC	1	11		
	EXECUTIVE OFFICER	MAJ	1	11		
	S3	MAJ	1	11		
	S1	CPT	1	31		
	S2	CPT	1			
	S3 AIR	CPT	1			
	S4	CPT	1			
	COMM OFFICER	CPT	1	49		
	MOTOR OFFICER	CPT	1			
	COMMAND SERGEANT MAJOR	E-9	1			
	PARA TOTAL		10			
02	TROOP HEADQUARTERS					
	TROOP COMMANDER	CPT	1	11		
	EXECUTIVE OFFICER	LT	1			
	AUTO MNT TECH	WO	1			
	FIRST SERGEANT	E-8	1			
	MOTOR SERGEANT	E-7	1			
	SUPPLY SERGEANT	E-6	1			
	SR TRACK VEH MECH	E-5	2			
	TROOP CLERK	E-5	1			
	EQUIP RECORDS CLERK	E-4	1			
	TRACK VEH MECH	E-4	4			
	WRECKER OPERATOR	E-4	1			
	ARMORER	E-4	1	01		
	A EQUIP RECORDS CLERK	E-3	1			
	LT VEHICLE DRIVER	E-3	2			
	TRACK VEHI MECH HLPR	E-3	2	01		
	SUPPLY CLERK	E-3	1	01		
	PARA TOTAL		22			
03	SQDN HEADQUARTERS SEC					
	LIAISON OFFICER	LT	3			
	INTELLIGENCE SERGEANT	E-8	1			
	OPERATIONS SERGEANT	E-8	1			
	ASST INTEL SGT	E-7	1			
	ASST OPERATIONS SGT	E-7	1	08		
	PERS STAFF NCO	E-7	1	07		
	LEGAL CLERK	E-6	1			
	VEHICLE COMMANDER	E-5	2	11		
	SR RADIO OPERATOR	E-4	2			
	OPERATIONS ASST	E-4	1	01		
	PER CARRIER DVR	E-4	5	11	63	
	CLERK TYPIST	E-4	2	01		
	RADIO OPERATOR	E-3	2	01		
	LT VEHICLE DRIVER	E-3	4	40		
	PARA TOTAL		27			

PARA	DESCRIPTION	GRADE	STRENGTH	REMARKS		
				1	2	3
04	SQDN COMM PLATOON					
	COMM CHIEF	E-6	1			
	TEAM CHIEF	E-5	2	09		
	SR FLE RADIO MECHANIC	E-5	1			
	RADIO TT OPERATOR	E-4	4	09		
	RADAR MECHANIC	E-4	1			
	FIELD RADIO MECHANIC	E-4	2	47		
	SR MESSAGE CLERK	E-4	1	09		
	SR FLD SWITCHBOARD OP	E-4	1	01		
	PER CARRIER DVR	E-4	3			
	MESSAGE CLERK	E-3	1	09		
MOTOR MESSENGER	E-3	2	01			
	PARA TOTAL		19			
05	SQDN SUPPORT PLAT HQ					
	PLATOON LEADER	LT	1	25		
	LT VEHICLE DVR	E-3	1	40		
	PARA TOTAL		2			
06	TRANSPORTATION SEC					
	SECTION COMMANDER	LT	1			
	TRUCKMASTER	E-7	1			
	SR HV VEHICLE DVR	E-5	4			
	AMMO SPECIALIST	E-4	1			
	HV VEHICLE DRIVER	E-4	12			
	AMMO HANDLER	E-3	2			
	LT VEHICLE DRIVER	E-3	1			
	PARA TOTAL		22			
07	SUPPLY SECTION					
	SUPPLY SERGEANT	E-7	1			
	SUPPLY SP	E-4	2	02		
	SUPPLY CLERK	E-3	2			
	PARA TOTAL		5			
08	HQ TRP MESS TEAM					
	SQDN MESS STEWARD	E-7	1			
	FIRST COOK	E-6	1			
	FIRST COOK	E-5	2			
	COOK	E-4	2	01		
	PARA TOTAL		6			
09	4 CAV TRP MESS TEAMS					
	MESS STEWARD	E-7	4			
	FIRST COOK	E-6	4			
	FIRST COOK	E-5	8			
	COOK	E-4	5	46	52	
	PARA TOTAL		21			
10	SQDN MAINTENANCE PLATOON					
	AUTO MNT TECH	WO	1			
	MOTOR SERGEANT	E-8	1			
	SR TRACK VEHICLE OP	E-5	3			
	SR RECOVERY VEHICLE OP	E-5	2	11	16	

PARA	DESCRIPTION	GRADE	STRENGTH	REMARKS		
				1	2	3
	WELDER	E-4	1	01		
	TANK TURRET MECHANIC	E-4	1	01		
	GP GEN OP/MECH	E-4	1	01		
	RECOVERY VEH OP	E-4	2	11	16	
	TRACK VEHICLE MECH	E-4	8			
	WRECKER OPERATOR	E-4	2			
	PLL CLERK	E-4	1	01		
	TRACK VEH MECH HELPER	E-3	3	01		
	PARA TOTAL		26			
11	SQDN MEDICAL PLAT HQ					
	MEDICAL OP ASST	LT	1	11	41	
	PLATOON SERGEANT	E-7	1			
	PARA TOTAL		2			
12	AID STATION SECTION					
	SR CLINICAL SPECIALIST	E-6	1			
	SR MEDICAL AIDMAN	E-5	2			
	CLINICAL SPECIALIST	E-5	1			
	MEDICAL AIDMAN	E-4	3	47		
	PER CARRIER DVR	E-4	1	11		
	PARA TOTAL		8			
13	AIDMAN SECTION					
	TROOP AIDMAN	E-5	11	11		
	PARA TOTAL		11			
14	EVACUATION SECTION					
	SECTION SERGEANT	E-5	1			
	AMBULANCE DRIVER	E-4	3			
	MEDICAL AIDMAN	E-4	5			
	AMBULANCE DRIVER	E-4	2	11		
	PARA TOTAL		11			
15	REDEYE SECTION HQ					
	REDEYE SECTION LEADER	LT	1			
	SECTION SERGEANT	E-6	1	01		
	PARA TOTAL		2			
16	5 REDEYE TEAMS					
	TEAM CHIEF	E-5	5	11		
	REDEYE GUNNER	E-4	5	01		
	PARA TOTAL		10			
	SRC TOTAL		204			
	REMARKS					
01	ALSO LIGHT VEHICLE DRIVER					
02	ALSO HEAVY VEHICLE DRIVER					
07	ALSO INFORMATION NCO					
08	ALSO TROOP EDUCATION NCO					
09	ALSO CRYPTOGRAPHIC EQUIPMENT OPERATOR					
11	ARMED WITH PISTOL AUTOMATIC CAL .45					
16	ARMED WITH GUN SUBMACHINE CAL .45					
25	ALSO ASSISTANT S4					
31	ALSO INFORMATION OFFICER					

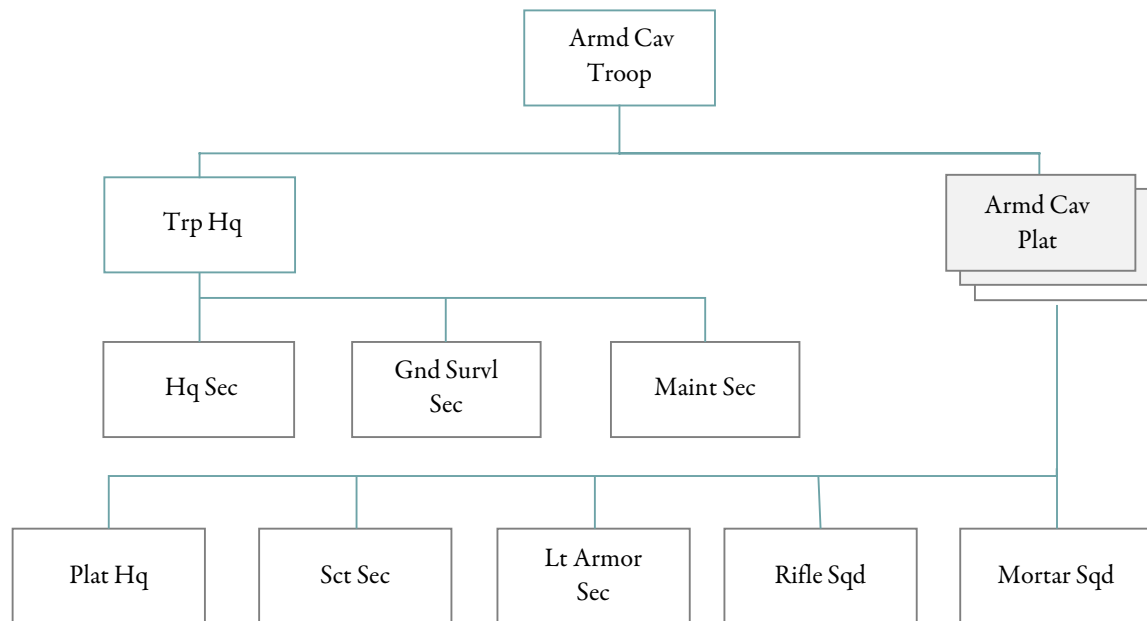
PARA	DESCRIPTION	GRADE	STRENGTH	REMARKS		
				1	2	3
40	ALSO RADIO OPERATOR					
41	ALSO SQUADRON STAFF OFFICER					
46	REMARK 01 APPLIES TO 2 EM					

EQUIPMENT ALLOWANCE		
PARA	DESCRIPTION	LEVEL
01	SQUADRON HQ	
	BAYONET-KNIFE W/SCABBARD FOR M16A1 RIFLE	10
	PISTOL CALIBER .45 AUTOMATIC	3
	RIFLE 5.56 MILLIMETER	7
02	TROOP HEADQUARTERS	
	BAYONET-KNIFE W/SCABBARD FOR M16A1 RIFLE	22
	MACHINE GUN CALIBER .50 HB FLEXIBLE FOR GROUND USE	2
	MOUNT TRIPOD MACHINE GUN HEAVY CALIBER 50	2
	NIGHT VISION SIGHT INDIVIDUAL SERVEP WEAPON AN/PVS-2	4
	PISTOL CALIBER .45 AUTOMATIC	1
	RADIO SET AN/VRC-64 MOUNTED IN TRUCK ¾ TON CARGO	1
	RADIO SET AN/VRC-64 MOUNTED IN TRUCK UTILITY ¼ TON	1
	RIFLE 5.56 MILLIMETER	21
	TRAILER CARGO ¼ TON 2 WHEEL	1
	TRAILER CARGO ¾ TON 2 WHEEL	1
	TRAILER CARGO 1½ TON 2 WHEEL	2
	TRUCK CARGO ¾ TON 4 X 4	1
	TRUCK CARGO 2½ TON 6 X 6	1
	TRUCK CARGO 2½ TON 6 X 6 W/WINCH	2
	TRUCK UTILITY ¼ TON 4 X 4	2
	TRUCK WRECKER 5 TON 6 X 6 W/WINCH	1
03	SQDN HEADQUARTERS SEC	
	BAYONET-KNIFE W/SCABBARD FOR M16A1 RIFLE	27
	CARRIER COMMAND AND RECONNAISSANCE ARMORED	2
	CARRIER COMMAND POST LIGHT TRACKED	2
	CARRIER PERSONNEL FULL TRACKED ARMORED	1
	LAUNCHER GRENADE N203 FOR XM16E1 RIFLE	2
	PISTOL CALIBER .45 AUTOMATIC	7
	RADIO SET AN/GRC-106 MOUNTED IN CARRIER COMD POST LIGHT TRACKED	2
	RADIO SET AN/VRC-12	2
	RADIO SET AN/VRC-46 MOUNTED IN CARRIER COMD POST LIGHT TRACKED	2
	RADIO SET AN/VRC-46 MOUNTED IN TRUCK ¼ TON	2
	RADIO SET AN/VRC-46 MOUNTED IN TRUCK ¾ TON CARGO	1
	RADIO SET AN/VRC-47 MOUNTED IN CARRIER COMD POST LIGHT TRACKED	2
	RADIO SET AN/VRC-47 MOUNTED IN TRUCK ¼ TON	3
	RADIO SET CONTROL GROUP AN/GRA-39	3
	RIFLE 5.56 MILLIMETER	20
	TRAILER CARGO ¾ TON 2 WHEEL	1
	TRAILER 1½ TON 2 WHEEL	1
	TRUCK CARGO ¾ TON 4 X 4	2
	TRUCK CARGO 2½ TON 6 X 6	1
	TRUCK UTILITY ¼ TON 4 X 4	6
04	SQDN COMM PLATOON	
	BAYONET-KNIFE W/SCABBARD FOR M16A1 RIFLE	19
	CARRIER COMMAND POST LIGHT TRACKED	3
	MACHINE GUN CALIBER .50 HB FOR GROUND USE	1
	MOUNT TRIPOD MACHINE GUN HEAVY CALIBER 50	1
	RADIO SET AN/VRC-46 MOUNTED IN CARRIER COMD POST LIGHT TRACKED	1

PARA	DESCRIPTION	LEVEL
	RADIO SET AN/VRC-49 MOUNTED IN TRUCK ¼ TON	1
	RADIO SET CONTROL GROUP AN/GRA-39	2
	RADIO TELETYPEWRITER AN/VSC-3	2
	RIFLE 5.56 MILLIMETER	19
	SWITCHBOARD TELEPHONE MANUAL SB-22/PT	1
	TELEPHONE SET TA-312/PT	1
	TRAILER CARGO ¼ TON 2 WHEEL	1
	TRAILER CARGO ¾ TON W WHEEL	1
	TRUCK CARGO ¾ TON 4 X 4	1
	TRUCK UTILITY ¼ TON 4 X 4	3
05	SQDN SUPPORT PLAT HQ	
	BAYONET-KNIFE W/SCABBARD FOR M16A1 RIFLE	2
	RADIO SET AN/VRC-46 MOUNTED IN TRUCK ¾ TON CARGO	1
	RIFLE 5.56 MILLIMETER	2
	TRAILER CARGO ¼ TON 2 WHEEL	1
	TRUCK UTILITY ¼ TON 4 X 4	1
06	TRANSPORTATION SEC	
	BAYONET-KNIFE W/SCABBARD FOR M16A1 RIFLE	22
	MACHINE GUN CALIBER .50 HB FLEXIBLE FOR GROUND USE	7
	MOUNT TRIPOD MACHINE GUN HEAVY CALIBER 50	7
	RADIO SET AN/VRC-46 MOUNTED IN TRUCK ¼ TON	1
	RIFLE 5.56 MILLIMETER	22
	TANK AND PUMP UNIT LIQUID DISPENSING TRUCKMOUNTING	5
	TRUCK CARGO 5 TON 6 X 6 LWB	9
	TRUCK CARGO 5 TON 6 X 6 LWB W/WINCH	7
	TRUCK UTILITY ¼ TON 4 X 4	1
07	SUPPLY SECTION	
	BAYONET-KNIFE W/SCABBARD FOR M16A1 RIFLE	5
	MACHINE GUN CALIBER .50 HB FLEXIBLE FOR GROUND USE	2
	MOUNT TRIPOD MACHINE GUN HEAVY CALIBER 50	2
	RIFLE 5.56 MILLIMETER	5
	TRAILER CARGO 1½ TON 2 WHEEL	2
	TRUCK CARGO 5 TON 6 X 6 LWB	5
08	HQ TRP MESS TEAMS	
	BAYONET-KNIFE W/SCABBARD FOR M16A1 RIFLE	6
	MACHINE GUN CALIBER .50 HB FLEXIBLE FOR GROUND USE	4
	MOUNT TRIPOD MACHINE GUN HEAVY CALIBER 50	4
	RIFLE 5.56 MILLIMETER	6
	TRAILER TANK WATER 400 GALLONS 1½ TON 2 WHEEL	1
	TRUCK CARGO 2½ TON 6 X 6	2
09	4 CAV TRP MESS TEAMS	
	BAYONET-KNIFE W/SCABBARD FOR M16A1 RIFLE	21
	MACHINE GUN CALIBER .50 HB FLEXIBLE FOR GROUND USE	4
	MOUNT TRIPOD MACHINE GUN HEAVY CALIBER 50	4
	RIFLE 5.56 MILLIMETER	21
	TRAILER TANK WATER 400 GALLONS 1½ TON 2 WHEEL	4
	TRUCK CARGO 2½ TON 6 X 6	4
10	SQDN MAINTENANCE PLAT	
	BAYONET-KNIFE W/SCABBARD FOR M16A1 RIFLE	26

PARA	DESCRIPTION	LEVEL
	LAUNCHER GRENADE M203 FOR XM16E1 RIFLE	2
	MACHINE GUN CALIBER .50 HB FLEXIBLE FOR GROUND USE	4
	MOUNT TRIPOD MACHINE GUN HEAVY CALIBER 50	4
	NIGHT VISION SIGHT CREW SERVED WEAPONS AN/TVS-2	2
	PISTOL CALIBER .45 AUTOMATIC	4
	RADIO SET AN/VRC-46 MOUNTED IN RECOVERY VEH FT LIGHT ARMORED	2
	RADIO SET AN/VRC-46 MOUNTED IN TRUCK ¼ TON	1
	RADIO SET AN/VRC-46 MOUNTED IN TRUCK ¾ TON CARGO	1
	RECOVERY VEHICLE FULL TRACKED LIGHT ARMORED	2
	RIFLE 5.56 MILIMETER	22
	SUBMACHINE GUN CALIBER .45	4
	TRAILER CARGO ¼ TON 2 WHEEL	1
	TRAILER CARGO 1½ TON 2 WHEEL	4
	TRUCK CARGO ¾ TON 4 X 4	2
	TRUCK CARGO 2½ TON 6 X 6 W/WINCH	4
	TRUCK UTILITY ¼ TON 4 X 4	1
	TRUCK WRECKER 5 TON 6 X 6 W/WINCH	2
11	SQDN MEDICAL PLAT HQ	
	PISTOL CALIBER .45 AUTOMATIC	1
	RADIO SET AN/VRC-66 MOUNTED IN TRUCK UTILITY ¼ TON	1
	RIFLE 5.56 MILLIMETER	1
	TRUCK UTILITY ¼ TON 4 X 4	1
12	AID STATION SECTION	
	CARRIER COMMAND POST LIGHT	1
	PISTOL CALIBER .45 AUTOMATIC	1
	RADIO SET AN/VRC-64 MOUNTED IN CARRIER COMMAND POST LIGHT TRACKED	1
	RIFLE 5.56 MILLIMETER	7
	TRAILER CARGO 1½ TON 2 WHEEL	1
	TRUCK CARGO 2½ TON 6 X 6	1
13	AIDMAN SECTION	
	PISTOL CALIBER .45 AUTOMATIC	11
14	EVACUATION SECTION	
	CARRIER PERSONNEL FULL TRACKED ARMORED	2
	PISTOL CALIBER .45 AUTOMATIC	2
	RADIO SET AN/VRC-66 MOUNTED IN CARRIER PERSONNEL FTA	2
	RIFLE 5.56 MILLIMETER	9
	TRUCK AMBULANCE ¼ TON 4 X 4	3
15	REDEYE SECTION HQ	
	BAYONET-KNIFE W/SCABBARD FOR M16A1 RIFLE	2
	RADIO SET AN/VRC-47 MOUNTED IN TRUCK ¼ TON	1
	RADIO SET CONTROL GROUP AN/GRA-39	1
	RIFLE 5.56 MILLIMETER	2
	TRAILER CARGO ¼ TON 2 WHEEL	1
	TRUCK UTILITY ¼ TON 4 X 4	1
16	5 REDEYE TEAMS	
	BAYONET-KNIFE W/SCABBARD FOR M16A1 RIFLE	10
	PISTOL CALIBER .45 AUTOMATIC	5
	RADIO SET AN/GRC-160 MTD IN TRUCK ¾ TON CARGO	1
	RIFLE 5.56 MILLIMETER	5
	TRUCK CARGO ¾ TON 4 X 4 W/WINCH	5

ARMORED CAVALRY TROOP, ARMORED CAVALRY SQUADRON, ARMORED DIVISION
OR
ARMORED CAVALRY TROOP, ARMORED CAVALRY SQUADRON, INFANTRY DIVISION (MECHANIZED)
Designation: Troop ____, ____, Squadron, ____, Cavalry



PERSONNEL ALLOWANCES

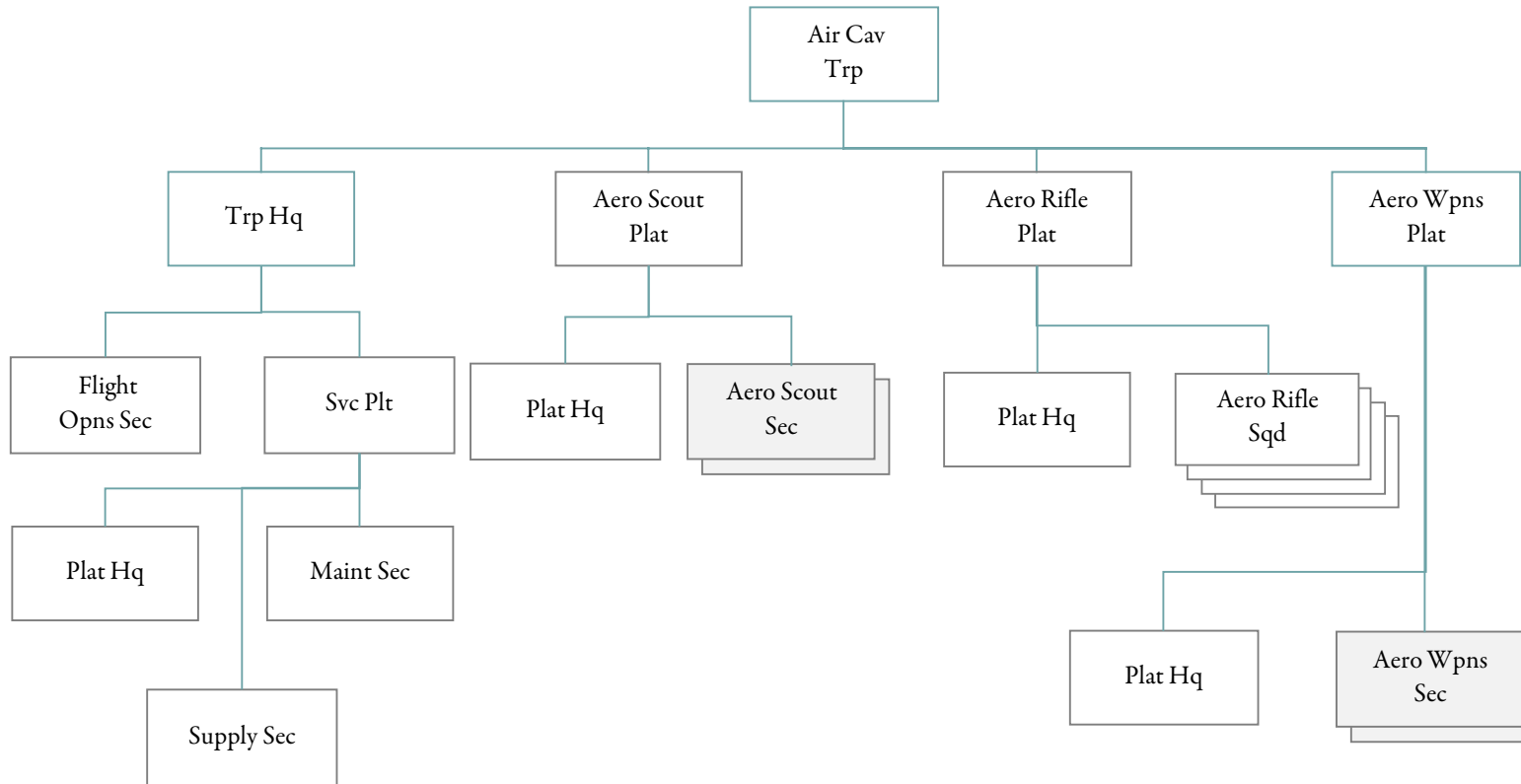
PARA	DESCRIPTION	GRADE	STRENGTH	REMARKS		
				1	2	3
01	HEADQUARTERS SECTION					
	TROOP COMMANDER	CPT	1	11		
	EXECUTIVE OFFICER	LT	1	28		
	FIRST SERGEANT	E-8	1			
	COMM CHIEF	E-6	1			
	SUPPLY SERGEANT	E-6	1			
	VEHICLE COMMANDER	E-6	1	11		
	TROOP CLERK	E-5	1	04		
	ARMORER	E-4	1	01		
	PER CARRIER DRIVER	E-4	2	11	16	
	SR RADIO OPERATOR	E-4	1	41		
	LT VEHICLE DRIVER	E-3	1	40		
	RADIO OPERATOR	E-3	1	01	41	
	SUPPLY CLERK	E-3	1	01		
	PARA TOTAL		14			
02	GOUND SURVL SECTION					
	SECTION LEADER	E-6	1			
	TEAM LEADER	E-5	1			
	SR RADAR OPERATOR	E-5	2			
	RADAR OPERATOR	E-4	2			
	PARA TOTAL		6			
03	MAINTENANCE SECTION					
	MOTOR SERGEANT	E-7	1			
	SR FLD RADIO MECHANIC	E-5	1			
	SR RECOVERY VEHICLE OP	E-5	1	11	16	
	SR TANK TURRET MECH	E-5	1			
	SR TRACK VEHICLE MECH	E-5	1			
	FIELD RADIO MECHANIC	E-4	1			
	TRACK VEHICLE MECHANIC	E-4	4	44		
	RECOVER VEH OPERATOR	E-4	1	11		
	EQUF RECORDS CLERK	E-4	1			
	TANK TURRET MECHANIC	E-4	1			
	TRACK VEH MECH HELPER	E-3	2	01		
	PARA TOTAL		15			
04	3 ARMD CAV PLAT HQ					
	PLATOON LEADER	LT	3			
	SCOUT DRIVER	E-4	3			
	PARA TOTAL		6			
05	3 SCOUT SECTIONS					
	SECTION LEADER	E-6	3			
	SQUAD LEADER	E-6	3			
	ASST SQUAD LEADER	E-5	6			
	SCOUT DRIVER	E-4	12			
	SCOUT OBSERVER	E-3	12			
	PARA TOTAL		36			
06	3 LT ARMOR SECTIONS					

PARA	DESCRIPTION	GRADE	STRENGTH	REMARKS		
				1	2	3
	PLATOON SERGEANT	E-7	3	11	45	48
	AR/AAV COMMANDER	E-6	6	11	48	
	AR/AAV DRIVER	E-5	9	11	48	
	GUNNER	E-5	9	11	16	48
	LOADER	E-3	9	11	48	
	PARA TOTAL		36			
07	3 RIFLE SQUADS					
	SQUAD LEADER	E-6	3			
	TEAM LEADER	E-5	6			
	AUTO RIFLEMAN	E-4	6			
	GRENADIER	E-4	6			
	PER CARRIER DRIVER	E-4	3			
	RIFLEMAN	E-3	9			
	PARA TOTAL		33			
08	3 MORTAR SQUADS					
	SQUAD LEADER	E-5	3			
	MORTAR CARRIER DRIVER	E-4	3			
	MORTAR GUNNER	E-4	3	11		
	AMMUNITION BEARER	E-3	3			
	ASST MORTAR GUNNER	E-3	3			
	PARA TOTAL		15			
	SRC TOTAL		161			
	REMARKS					
01	ALSO LIGHT VEHICLE DRIVER					
02	ALSO SWITCHBOARD OPERATOR					
11	ARMED WITH PISTOL AUTOMATIC CAL .45					
16	ARMED WITH GUN SUBMACHINE CAL .45					
28	ALSO MOTOR OFFICER					
40	ALSO WIREMAN					
41	ALSO CRYPTOGRAPHIC EQUIPMENT OPERATOR					
44	1 EM DRIVES CARRIER PERSONNEL FULL TRACKED					
45	ALSO AR/AAV COMMANDER					
48	MUST HAVE COMPLETED TRANSITIONAL TRAINING ON THE SHILLELAGH WEAPONS SYSTEM					

EQUIPMENT ALLOWANCE		
PARA	DESCRIPTION	LEVEL
01	HEADQUARTERS SECTION	
	BAYONET-KNIFE W/SCABBARD FOR M16A1 RIFLE	14
	CARRIER COMMAND AND RECONNAISSANCE ARMORED	1
	CARRIER PERSONNEL FULL TRACKED ARMORED	1
	LAUNCHER GRENADE M203 FOR XM16E1 RIFLE	1
	MACHINE GUN CALIBER .50 HB FLEXIBLE FOR GROUND USE	1
	MOUNT TRIPOD MACHINE GUN HEAVY CALIBER 50	1
	NIGHT VISION SIGHT CREW SERVED WEAPONS AN/TVS-2	2
	NIGHT VISION SIGHT INDIVIDUAL SERVEP WEAPONS AN/PVS-2	2
	PISTOL CALIBER .45 AUTOMATIC	4
	RADIO SET AN/GRC-106 MOUNTED IN CARRIER PERSONNEL FTA	1
	RADIO SET AN/VRC-12	1
	RADIO SET AN/VRC-47 MOUNTED IN CARRIER PERSONNEL FTA	1
	RADIO SET AN/VRC-47 MOUNTED IN TRUCK ¼ TON	1
	RADIO SET CONTROL GROUP AN/GRA-39	1
	RIFLE 5.56 MILLIMETER	10
	SUBMACHINE GUN CALIBER .45	2
	SWITCHBOARD TELEPHONE MANUAL SB-22/PT	1
	TELEPHONE SET TA=312/PT	3
	TRAILER CARGO 1½ TON 2 WHEEL	1
	TRUCK CARGO 2½ TON 6 X 6 W/WINCH	1
	TRUCK UTILITY ¼ TON 4 X 4	2
02	GROUND SURVL SECTION	
	BAYONET-KNIFE W/SCABBARD FOR M16A1 RIFLE	6
	CARRIER PERSONNEL FULL TRACKED ARMORED	2
	LAUNCHER GRENADE M203 FOR XM16E1 RIFLE	2
	NIGHT VISION SIGHT CREW SERVED WEAPONS AN/TVS-2	2
	RADAR SET AN/PPS-5	2
	RADIO SET AN/GRC-160 MTD IN CARRIER PERSONNEL FTA	2
	RIFLE 5.56 MILLIMETER	6
03	MAINTENANCE SECTION	
	BAYONET-KNIFE W/SCABBARD FOR M16A1 RIFLE	15
	CARRIER PERSONNEL FULL TRACKED ARMORED	1
	LAUNCHER GRENADE M203 FOR XM16E1 RIFLE	1
	PISTOL CALIBER .45 AUTOMATIC	2
	RADIO SET AN/VRC-46 MOUNTED IN RECOVERY VEH FT LIGHT ARMORED	1
	RADIO SET AN/VRC-47 MOUNTED IN TRUCK ¼ TON	1
	RADIO SET AN/VRC-64 MOUNTED IN CARRIER PERSONNEL FTA	1
	RECOVERY VEHICLE FULL TRACKED LIGHT ARMORED	1
	RIFLE 5.56 MILLIMETER	13
	SUBMACHINE GUN CALIBER .45	1
	TRAILER ¼ TON 2 WHEEL	1
	TRAILER CARGO 1½ TON 2 WHEEL	1
	TRUCK CARGO 2½ TON 6 X 6	1
	TRUCK UTILITY ¼ TON 4 X 4	1
04	3 ARMD CAV PLAT HQ	
	BAYONET-KNIFE W/SCABBARD FOR M16A1 RIFLE	6
	CARRIER COMMAND AND RECONNAISSANCE ARMORED	3

PARA	DESCRIPTION	LEVEL
	NIGHT VISION SIGHT CREW SERVED WEAPONS AN/TVS-2	3
	NIGHT VISION SIGHT TRIPOD MOUNTED AN/TVS-4	3
	RADIO SET AN/VRC-12 MOUNTED IN CARRIER PERSONNEL FTA	3
	RADIO SET CONTROL GROUP AN/GRA-39	3
	RIFLE 5.56 MILLIMETER	6
05	3 SCOUT SECTIONS	
	BAYONET-KNIFE W/SCABBARD FOR M16A1 RIFLE	36
	CARRIER COMMAND AND RECONNAISSANCE ARMORED	12
	LAUNCHER GRENADE M203 FOR XM16E1 RIFLE	12
	NIGHT VISION SIGHT CREW SERVED WEAPONS AN/TVS-2	12
	NIGHT VISION SIGHT INDIVIDUAL SERVEP WEAPONS AN/PVS-2	12
	RADIO SET AN/GRC-160 MTD IN CARRIER COMMAND AND RECONNAISSANCE	6
	RADIO SET AN/VRC-46 MOUNTED IN CARRIER RECONNAISSANCE FTA	6
	RIFLE 5.56 MILLIMETER	36
06	3 LT ARMOR SECTIONS	
	ARMORED RECONNAISSANCE AIRBORNE ASSAULT VEHICLES	9
	BAYONET-KNIFE W/SCABBARD FOR M16A1 RIFLE	36
	LAUNCHER GRENADE M203 FOR XM16E1 RIFLE	9
	NIGHT VISION SIGHT INDIVIDUAL SERVEP WEAPON AN/PVS-2	9
	PISTOL CALIBER .45 AUTOMATIC	36
	RADIO SET AN/VRC-12 MOUNTED IN ARMD RECON ABN ASSAULT VEHICLE	3
	RADIO SET AN/VRC-64 MOUNTED IN ARMD RECON ABN ASSAULT VEHICLE	6
	RIFLE 5.56 MILLIMETER	9
	SUBMACHINE GUN CALIBER .45	9
07	3 RIFLE SQUADS	
	BAYONET-KNIFE W/SCABBARD FOR M16A1 RIFLE	33
	CARRIER PERSONNEL FULL TRACKED ARMORED	3
	DEMOLITION SET EXPLOSIVE INITIATING NON ELECTRIC	3
	LAUNCHER GRENADE M203 FOR XM16E1 RIFLE	6
	MACHINE GUN 7.62 MILLIMETER LIGHT FLEXIBLE	3
	MOUNT TRIPOD MACHINE GUN 7.62 MILLIMETER	3
	NIGHT VISION SIGHT CREW SERVED WEAPONS AN/TVS-2	3
	NIGHT VISION SIGHT INDIVIDUAL SERVEP WEAPON AN/PVS-2	6
	RADIO SET AN/PRC-77	3
	RADIO SET AN/VRC-64 MOUNTED IN CARRIER PERSONNEL FTA	3
	RIFLE 5.56 MILLIMETER	33
	BIPOD RIFLE 5.56 MILLIMETER W/CARRYING CASE F/M16A1 RIFLE	6
08	MORTAR SQUAD	
	BAYONET-KNIFE W/SCABBARD FOR M16A1 RIFLE	15
	CARRIER 107 MILLIMETER MORT SELF PROPELLED (LESS MORTAR)	3
	MORTAR 4.2 INCH ON MOUNT	3
	NIGHT VISION SIGHT CREW SERVED WEAPONS AN/TVS-2	3
	PISTOL CALIBER .45 AUTOMATIC	3
	RADIO SET AN/VRC-64 MOUNTED IN CARRIER 107MM MORTAR SP	3
	RIFLE 5.56 MILLIMETER	12

AIR CAVALRY TROOP, ARMORED CAVALRY SQUADRON, ARMORED DIVISION
OR
AIR CAVALRY TROOP, ARMORED CAVALRY SQUADRON, INFANTRY DIVISION (MECHANIZED)
Designation: Troop ____ (air), ____ Squadron, ____ Cavalry



PERSONNEL ALLOWANCES

PARA	DESCRIPTION	GRADE	STRENGTH	REMARKS		
				1	2	3
01	TROOP HEADQUARTERS					
	TROOP COMMANDER	MAJ	1	17		
	HELICOPTER PILOT	WO	1	17		
	FIRST SERGEANT	E-8	1			
	UH-1 CREW CHIEF	E-5	1	17		
	TROOP CLERK	E-5	1			
	ARMORER	E-4	1	01		
	PARA TOTAL		6			
02	FLIGHT OPERATIONS SEC					
	FLIGHT OP OFFICER	CPT	1	17	32	
	OPNS SGT	E-7	1			
	COMM CHIEF	E-5	1			
	FLIGHT OPERATIONS SP	E-5	1			
	SR RADIO OPERATOR	E-4	1	01	04	
	RADIO OPERATOR	E-3	1	01	04	
	PARA TOTAL		6			
03	AERO SCOUT PLAT HQ					
	PLATOON COMMANDER	CPT	1	17		
	PLATOON SERGEANT	E-7	1	17	61	
	PARA TOTAL		2			
04	2 AERO SCOUT SECS					
	SECTION COMMANDER	LT	2	17		
	TEAM LEADER	LT	2	17		
	HELICOPTER PILOT	WO	4	17		
	OH-6 CREW CHIEF	E-5	8	17	61	
05	AERO RIFLE PLATOON HQ					
	PLATOON COMMANDER	CPT	1	17		
	HELICOPTER PILOT	WO	9	17		
	PLATOON SERGEANT	E-7	1			
	UH-1 CREW CHIEF	E-5	5	17		
	PARA TOTAL		16			
06	4 AERO RIFLE SQUADS					
	SQUAD LEADER	E-6	4			
	TEAM LEADER	E-5	8			
	AUTO RIFLEMAN	E-4	8			
	GRENADIER	E-4	8			
	RIFLEMAN	E-3	12			
	PARA TOTAL		40			
07	AERO WEAPONS PLAT HQ					
	PLATOON COMMANDER	CPT	1	17		
	HELICOPTER PILOT	WO	1	17		
	PLATOON SERGEANT	E-7	1			
	PARA TOTAL		3			
08	2 AERO WEAPONS SECS					
	SECTION COMMANDER	LT	2	17		
	TEAM LEADER	LT	2	17		

PARA	DESCRIPTION	GRADE	STRENGTH	REMARKS		
				1	2	3
	HELICOPTER PILOT	WO	12	17		
	AH-1G CREW CHIEF	E-5	8			
	PARA TOTAL		24			
09	SERVICE PLATOON HQ					
	PLATOON COMMANDER	CPT	1	17		
	PARA TOTAL		1			
10	MAINTENANCE SECTION					
	SECTION CHIEF	WO	1			
	HELICOPTER PILOT	WO	1	17		
	ACFT ARMAMENT SUPV	E-7	1			
	MAINT SUPERVISOR	E-7	1			
	TECHNICAL INSP	E-6	1	17		
	UH-1 CREW CHIEF	E-5	1	17		
	SR AH-1G HCPTR RPMN	E-5	2			
	SR ACFT ARMAMENT MECH	E-5	6			
	SR AVIONICS MECHANIC	E-5	2			
	SR UH-1 HCPTR RPMN	E-5	2			
	AH-1G HCPTR RPMN	E-4	2			
	AIRCRAFT ARMT MECH	E-4	7			
	AVIONICS MECHANIC	E-4	2			
	FIELD RADIO MECHANIC	E-4	1	01		
	UH-1 HCPTR RPMN	E-4	2			
	WHEEL VEH MECH	E-4	2	01		
	EQUIP RECORDS CLERK	E-4	1			
	ACFT MAINTENANCE APPR	E-3	1	01		
	PARA TOTAL		36			
11	SUPPLY SECTION					
	SECTION CHIEF	WO	1	17		
	HELICOPTER PILOT	WO	1	17		
	SUPPLY SERGEANT	E-6	1			
	UH-1 CREW CHIEF	E-5	1	17		
	AMMO STORAGE SP	E-4	2	02		
	ACFT FUELS HAND SP	E-4	2	01		
	PETRL STORAGE SP	E-4	1			
	AIRCRAFT SERVICEMAN	E-3	3	01		
	AMMO STORAGE HELPER	E-3	2			
	PETRL SUPPLY HANDLER	E-3	1	01		
	SUPPLY CLERK	E-3	1	01		
	PARA TOTAL		16			
	SRC TOTAL		166			
	REMARKS					
01	ALSO LIGHT VEHICLE DRIVER					
02	ALSO HEAVY VEHICLE DRIVER					
04	ALSO SWITCHBOARD OPERATOR					
17	ARMED WITH REVOLVER CALIBER .38 4 INCH BARREL					
32	ALSO EXECUTIVE OFFICER					
61	ALSO AERIAL OBSERVER					

EQUIPMENT ALLOWANCE

PARA	DESCRIPTION	LEVEL
01	TROOP HEADQUARTERS	
	ARMAMENT SUBSYSTEM HELICOPTER 7.62 MILLIMETER MACHINE GUN LIGHT	1
	BAYONET-KNIFE W/SCABBARD FOR M16A1 RIFLE	6
	HELICOPTER UTILITY UH-1H	1
	LAUNCHER GRENADE M203 FOR ZM16E1 RIFLE	1
	RADIO SET AN/URC-10	1
	RADIO SET AN/VRC-47 MOUNTED IN TRUCK ¼ TON	1
	REVOLVER CALIBER .38 4 INCH BARREL	3
	RIFLE 5.56 MILLIMETER	3
	TRAILER CARGO ¼ TON 2 WHEEL	1
	TRUCK UTILITY ¼ TON 4 X 4	1
02	FLIGHT OPERATIONS SEC	
	BAYONET-KNIFE W/SCABBARD FOR M16A1 RIFLE	6
	RADIO SET AN/GRC-106 MOUNTED IN TRUCK ¾ TON CARGO	1
	RADIO SET AN/VRC-47 MOUNTED IN TRUCK ¼ TON	1
	RADIO SET AN/VRC-47 MOUNTED IN TRUCK ¾ TON CARGO	1
	REVOLVER CALIBER .38 4 INCH BARREL	1
	RIFLE 5.56 MILLIMETER	5
	SWITCHBOARD TELEPHONE MANUAL SB-22/PT	1
	TLELEPHONE SET TA-312/PT	8
	TRAILER CARGO ¼ TON 2 WHEEL	1
	TRAILER CARGO ¾ TON 2 WHEEL	1
	TRUCK CARGO ¾ TON 4 X 4	1
	TRUCK UTILITY ¼ TON 4 X 4	1
03	AERO SCOUT PLAT HQ	
	ARMAMENT SUBSYSTEM HELICOPTER 7.62 MM MACHINE GUN HIGH RATE	1
	BAYONET-KNIFE W/SCABBARD FOR M16A1 RIFLE	2
	HELICOPTER OBSERVATION OH-6A	1
	RADIO SET AN/PRC-77	1
	RADIO SET AN/URC-10	1
	REVOLVER CALIBER .38 4 INCH BARREL	2
04	2 AERO SCOUT SECS	
	ARMAMENT SUBSYSTEM HELICOPTER 7.62MM MACHINE GUN HIGH RATE	8
	BAYONET-KNIFE W/SCABBARD FOR M16A1 RIFLE	16
	HELICOPTER OBSERVATION OH-6A	8
	RADIO SET AN/PRC-77	2
	RADIO SET AN/URC-10	8
	REVOLVER CALIBER .38 4 INCH BARREL	16
05	AERO RIFLE PLATOON HQ	
	ARMAMENT SUBSYSTEM HELICOPTER 7.62 MILLIMETER MACHINE GUN LIGHT	5
	BAYONET-KNIFE W/SCABBARD FOR M16A1 RIFLE	16
	HELICOPTER UTILITY UH-1H	5
	NIGHT VISION SIGHT INDIVIDUAL SERVEP WEAPONS AN/PVS-2	8
	RADIO SET AN/PRC-77	5
	RADIO SET AN/URC-10	5
	REVOLVER CALIBER .38 4 INCH BARREL	15
	RIFLE 5.56 MILLIMETER	1
06	4 AERO RIFLE SQUADS	

PARA	DESCRIPTION	LEVEL
	BAYONET-KNIFE W/SCABBARD FOR M16A1 RIFLE	40
	LAUNCHER GRENADE M203 FOR XM16E1 RIFLE	8
	MACHINE GUN 7.62 MILLIMETER LIGHT FLEXIBLE	4
	MOUNT TRIPOD MACHINE GUN 7.62 MILLIMETER	4
	NIGHT VISION SIGHT INDIVIDUAL SERVEP WEAPON AN/PVS-2	8
	RIFLE 5.56 MILLIMETER	40
	BIPOD RIFLE 5.56 MILLIMETER W/CARRYING CASE F/M16A1 RIFLE	8
07	AERO WEAPONS PLAT HQ	
	ARMAMENT POD AIRCRAFT 7.62 MILLIMETER MACHINE GUN	2
	ARMAMENT SUBSYS HEL 7.62MM MG - 40MM GRENADE LNCHR HIGH RATE	1
	BAYONET-KNIFE W/SCABBARD FOR M16A1 RIFLE	3
	HELICOPTER ATTACK AH-1G	1
	LAUNCHER ROCKET AIRCRAFT 2.75 INCH 19 TUBE	2
	RADIO SET AN/PRC-77	1
	RADIO SET AN/URC-10	1
	REVOLVER CALIBER .38 4 INCH BARREL	2
	RIFLE 5.56 MILLIMETER	1
08	2 AERO WEAPONS SECS	
	ARMAMENT POD AIRCRAFT 7.62 MILLIMETER AMCHINE GUN	8
	ARMAMENT SUBSYS HEL 7.62MM MG - 40MM GRENADE LNCHR HIGH RATE	8
	BAYONET-KNIFE W/SCABBARD FOR M16A1 RIFLE	24
	HELICOPTER ATTACK	8
	LAUNCHER ROCKET AIRCRAFT 2.75 INCH	8
	LAUNCHER ROCKET AIRCRAFT 2.75 INCH 19 TUBE	14
	MACHINE GUN 7.62 MILLIMETER SIX BARRELS	3
	RADIO SET AN/URC-10	8
	REVOLVER CALIBER .38 4 INCH BARREL	16
	RIFLE 5.546 MILLIMETER	8
09	SERVICE PLATOON HQ	
	BAYONET-KNIFE W/SCABBARD FOR M16A1 RIFLE	1
	REVOLVER CALIBER .38 4 INCH BARREL	1
10	MAINTENANCE SECTION	
	ARMAMENT SUBSYSTEM HELICOPTER 7.62 MM MACHINE GUN DOOR MTD	1
	BAYONET-KNIFE W/SCABBARD FOR M16A1 RIFLE	36
	HELICOPTER UTILITY UH-1H	1
	MACHINE GUN CALIBER .50 HB FLEXIBLE FOR GROUND USE	2
	MOUNT TRIPOD MACHINE GUN HEAVY CALIBER 50	2
	RADIO SET AN/URC-10	1
	RADIO SET AN/VRC-47 MOUNTED IN TRUCK ¼ TON	1
	REVOLVER CALIBER .38 4 INCH BARREL	3
	RIFLE 5.56 MILLIMETER	33
	TRAILER CARGO ¼ TON 2 WHEEL	1
	TRAILER CARGO ¾ TON 2 WHEEL	2
	TRAILER CARGO 1½ TON 2 WHEEL	3
	TRANSPORTER AIRMOBILE HYD LIFT FOR SHELTER AND X-4 CONTAINER	2
	TRUCK CARGO ¾ TON 4 X 4	2
	TRUCK CARO 2½ TON 6 X 6 W/WINCH	2
	TRUCK UTILITY ¼ TON 4 X 4	1
	TRUCK VANK SHOP 2½ TON 6 X 6	1

PARA	DESCRIPTION	LEVEL
11	SUPPLY SECTION	
	ARMAMENT SUBSYSTEM HELICOPTER 7.62MM MACHINE GUN DOOR MTD	1
	BAYONET-KNIFE W/SCABBARD FOR M16A1 RIFLE	16
	HELICOPTER UTILITY UH-1H	1
	MACHINE GUN CALIBER .50 HB FLEXIBLE FOR GROUND USE	5
	MOUNT TRIPOD MACHINE GUN HEAVY CALIBER 50	5
	RADIO SET AN/URC-10	1
	REVOLVER CALIBER .38 4 INCH BARREL	3
	RIFLE 5.56 MILLIMETER	13
	TRAILER AMMUNITION 1½ TON 2 WHEEL	2
	TRAILER CARGO 1½ TON 2 WHEEL	3
	TRUCK CARGO 2½ TON 6 X 6 W/WINCH	3
	TRUCK CARGO 5 TON 6 X 6 LWB W/WINCH	2
	TRUCK TANK FUEL SERVICING 2½ TON 6 X 6	4