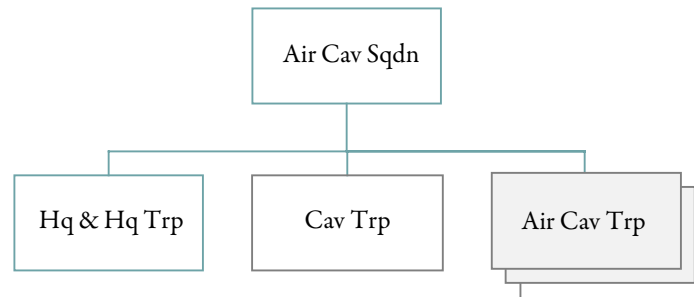


**AIR CAVALRY SQUADRON
AIRBORNE DIVISION**

Designation: ____ Squadron (Air), ____ Cavalry

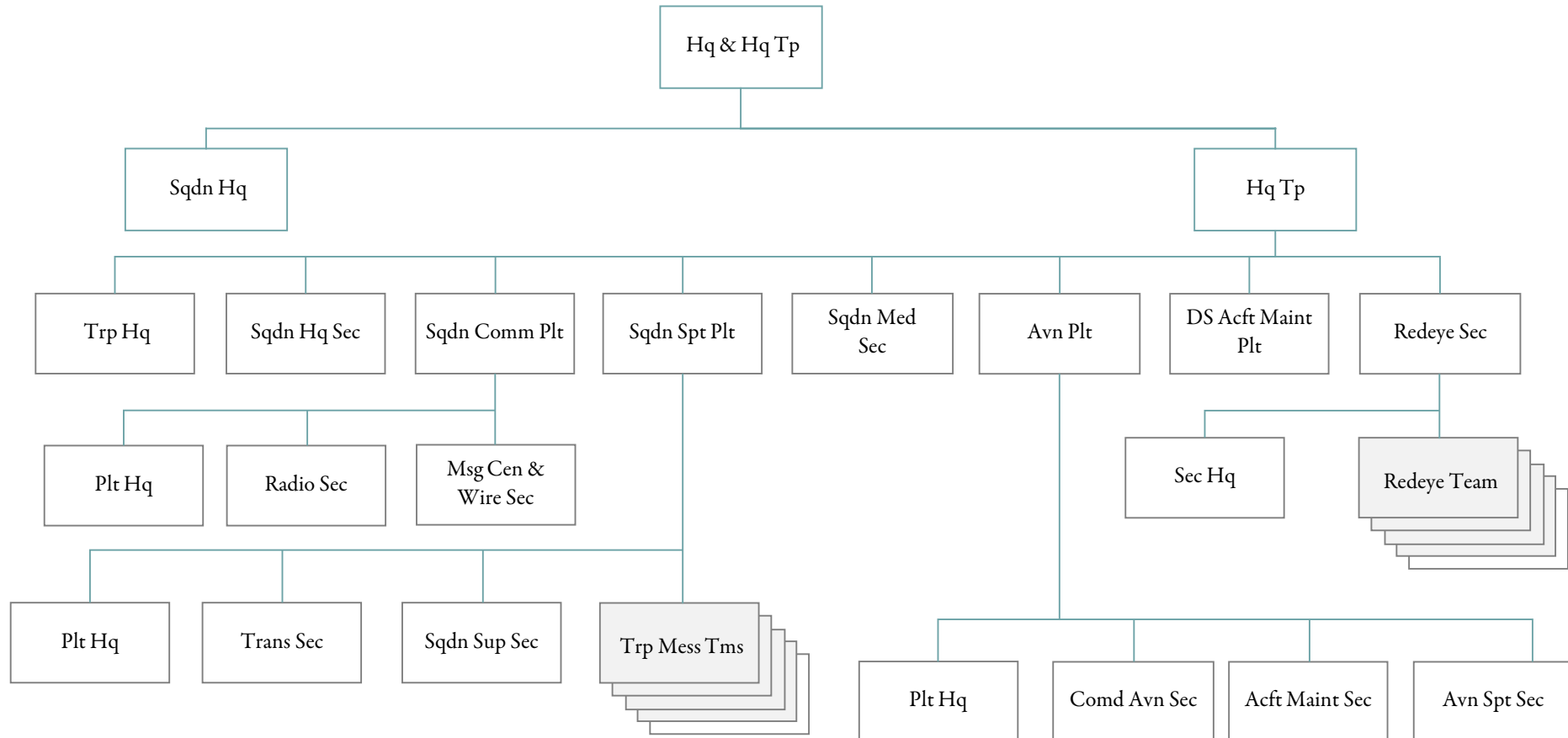


PERSONNEL ALLOWANCES

PARA	DESCRIPTION	GRADE	STRENGTH	REMARKS		
				1	2	3
01	HQ & HQ TROOP					
	OFFICERS	19				
	WARRANT OFFICERS	7				
	ENLISTED	224				
	PARA TOTAL	250				
02	CAVALRY TROOP					
	OFFICERS	5				
	WARRANT OFFICERS					
	ENLISTED	128				
	PARA TOTAL	133				
03	3 AIR CAV TRP					
	OFFICERS	51				
	WARRANT OFFICERS	90				
	ENLISTED	411				
	PARA TOTAL	552				
	SRC TOTAL	935				

**HEADQUARTERS AND HEADQUARTERS TROOP
AIR CAVALRY SQUADRON
AIRBORNE DIVISION**

Designation: Headquarters, ____ Squadron (Air), ____ Cavalry
Headquarters Troop, ____ Squadron (Air), ____ Cavalry



PERSONNEL ALLOWANCES

PARA	DESCRIPTION	GRADE	STRENGTH	REMARKS		
				1	2	3
01	SQDN HEADQUARTERS					
	SQUADRON COMMANDER	LTC	1	16		
	EXECUTIVE OFFICER	MAJ	1	16		
	S-3	MAJ	1	16		
	AVN MEDICAL OFFICER	CPT	1	16		
	AVN SAFETY OFFICER	CPT	1	16		
	C-E STAFF OFFICER	CPT	1	95		
	CHAPLAIN	CPT	1			
	MAINT OFFICER	CPT	1	16	97	
	S-1	CPT	1			
	S-2	CPT	1	16		
	S-3	CPT	1	16		
	COMMAND SERGEANT MAJOR	E-9	1			
		PARA TOTAL		12		
02	TROOP HEADQUARTERS					
	TROOP COMMANDER	CPT	1	16		
	EXECUTIVE OFFICER	LT	1	16		
	FIRST SERGEANT	E-8	1	10		
	MOTOR SERGEANT	E-8	1			
	SUPPLY SERGEANT	E-6	1			
	SR WHL VEH MECH	E-5	2			
	UNIT CLERK	E-5	1			
	ARMORER	E-4	1			
	GP POWER GEN OP/MECH	E-4	3			
	PLL CLERK	E-4	1			
	WHEEL VEH MECH	E-4	5	01		
	WRECKER OPERATOR	E-3	1			
	LIGHT VEH DRIVER	E-3	1			
	PWR GEN EQUIP HLPR	E-3	2	01		
	SUPPLY CLERK	E-3	1	01		
	WHL VEH MECH HLPR	E-3	2			
	PARA TOTAL		25			
03	SQDN HQ SECTION					
	ASST S-3	CPT	1	16		
	INTELLIGENCE SERGEANT	E-8	1			
	OPERATIONS SERGEANT	E-8	1			
	ASST OPN SGT	E-7	1	08		
	PERS STAFF NCO	E-7	1	07		
	SENIOR AC COUNSELLER	E-7	1			
	FLIGHT OPN CHIEF	E-6	1			
	LEGAL CLERK	E-6	1			
	FLT OPN SP	E-5	1			
	CHAPLAIN ASST	E-4	1	01		
	CLERK TYPIST	E-4	2			
	FLIGHT OP SP	E-4	1	01		
	GENERAL DRAFTSMAN	E-4	1	01		

PARA	DESCRIPTION	GRADE	STRENGTH	REMARKS		
				1	2	3
	SR RADIO OPERATOR	E-4	2	01		
	SR VOICE RADIO OP	E-4	1	01		
	LIGHT VEH DRIVER	E-3	2			
	RADIO OPERATOR	E-3	1	01		
	VOICE RADIO OPERATOR	E-3	2	01		
	PARA TOTAL		22			
04	SQDN COMM PLT HQ					
	COMM CHIEF	E-7	1			
	FIELD C-E EQUIP MECH	E-4	1			
	SR VOICE RADIO OP	E-4	1			
	VOICE RADIO OPERATOR	E-3	1	01		
	PARA TOTAL		4			
05	RADIO SECTION					
	SECTION CHIEF	E-5	1			
	RAT'T TEAM CHIEF	E-5	1			
	RAT'T OPERATOR	E-4	4	01		
	PARA TOTAL		6			
06	MSG CEN-WIRE SEC					
	SECTION SERGEANT	E-6	1			
	SR FLD SWBD OP	E-4	1			
	SR MESSAGE CLERK	E-4	1	01		
	FIELD SWBD OPERATOR	E-3	1			
	TAC WIRE OPNS SP	E-3	1			
	PARA TOTAL		5			
07	SQDN SPT PLT HQ					
	PLATOON LEADER	LT	1	25		
	PLATOON SERGEANT	E-7	1			
	LT VEH DRIVER	E-3	1			
	PARA TOTAL		3			
08	TRANSPORTATION SEC					
	TRUCKMASTER	E-6	1			
	SR LT VEH DRIVER	E-5	2			
	AMMO STORAGE SP	E-4	1			
	LT VEHICLE DRIVER	E-4	6			
	AMMO STORAGE HANDLER	E-3	4			
	PARA TOTAL		14			
09	SQDN SUPPLY SECTION					
	SUPPLY SERGEANT	E-7	1			
	SUPPLY SPECIALIST	E-4	2	01		
	SUPPLY CLERK	E-3	2			
	PARA TOTAL		5			
10	5 TRP MESS TEAMS					
	DINING FACILITY MANAGER	E-7	5			
	FIRST COOK	E-6	5			
	FIRST COOK	E-5	11	96		
	COOK	E-4	9	01		
	PARA TOTAL		30			
11	SQDN MEDICAL SECTION					

PARA	DESCRIPTION	GRADE	STRENGTH	REMARKS		
				1	2	3
	MED OP ASST	LT	1			
	SECTION SERGEANT	E-6	1			
	CLINICAL SPECIALIST	E-5	1			
	SR MEDICAL AIDMAN	E-5	2			
	TROOP AIDMAN	E-5	12	16		
	AMBULANCE DRIVER	E-4	2			
	MEDICAL AIDMAN	E-4	3	01		
	PARA TOTAL		22			
12	AVIATION PLT HQ					
	PLATOON COMMANDER	CPT	1	16		
	PLATOON SERGEANT	E-7	1			
	UH-1 TECHNICAL INSP	E-6	1	16		
	LIGHT VEH DRIVER	E-3	1			
	PARA TOTAL		4			
13	COMD AVN SEC					
	SECTION LEADER	LT	1	16		
	HELICOPTER PILOT	WO	5	16		
	UH-1 CREW CHIEF	E-5	4	16		
	PARA TOTAL		10			
14	AIRCRAFT MAINT SEC					
	AIRCRAFT MAINT TECH	WO	1	16		
	SR UH-1 RPMN	E-5	1			
	AVIONICS MECH	E-4	1			
	MATERIAL SUPPLY SP	E-4	1	01		
	UH-1 REPAIRMAN	E-4	1	01		
	PARA TOTAL		5			
15	AVIATION SPT SEC					
	AFLD SERVICE SUPV	E-5	1			
	ACFT FUELS HAND SP	E-4	2	01		
	AIRFIELD SERVICEMAN	E-3	2	01		
	PARA TOTAL		5			
16	DS ACFT MAINT PLT					
	ACFT REPAIR TECH	WO	1	16		
	PLATOON SERGEANT	E-7	1			
	CHIEF HEL TECH INSP	E-7	1	16		
	MAINTENANCE SUPERVISOR	E-7	1			
	AIRFRAME RPR SUPV	E-6	1			
	HEL TECH INSP	E-6	3	16		
	MATERIEL SUPPLY SP	E-5	1			
	SR ACFT ROTOR RPMN	E-5	2			
	SR ACFT SGL TURB ENG R	E-5	2			
	SR AH-1G RPMN	E-5	4			
	SR AIRFRAME RPMN	E-5	4			
	SR OH-6/OH-58 RMPN	E-5	4			
	SR UH-1 RPMN	E-5	4			
	ACFT ELECTRICIAN	E-4	1			
	ACFT HYD RPMN	E-4	1			
	ACFT PWR TN RPMN	E-4	1			

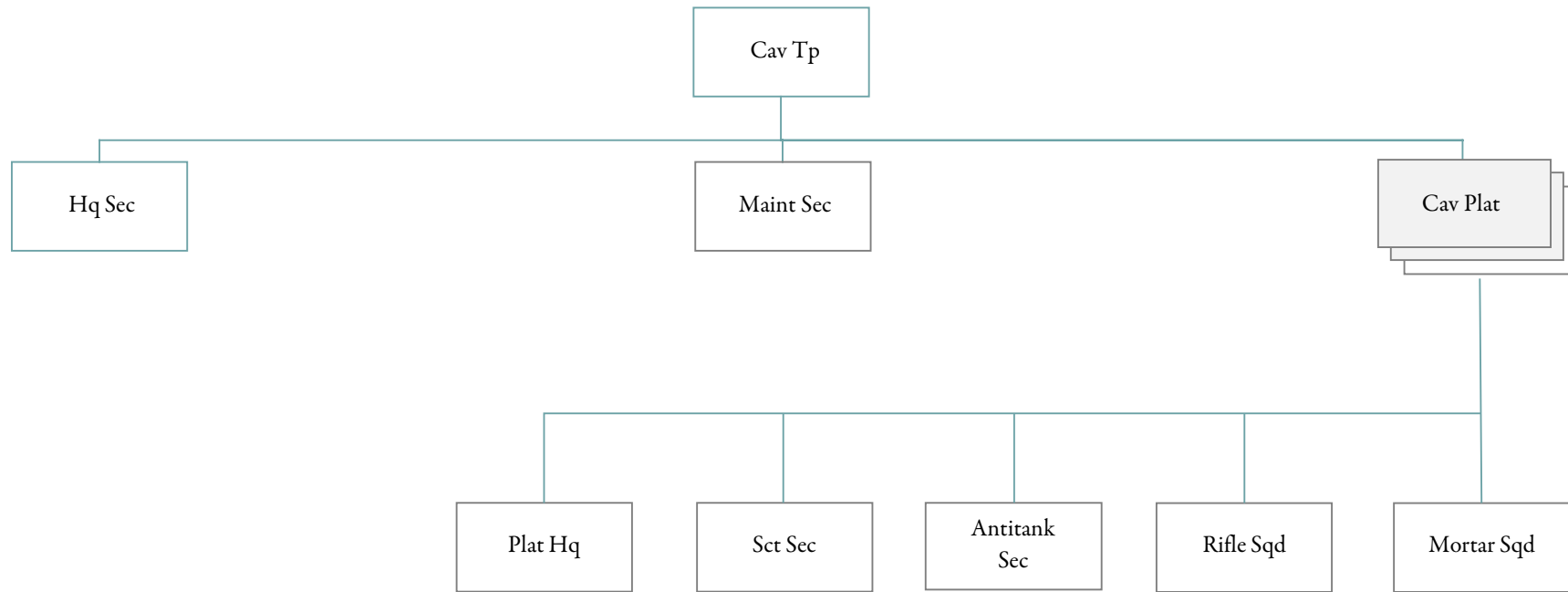
PARA	DESCRIPTION	GRADE	STRENGTH	REMARKS		
				1	2	3
	ACFT ROTOR RPMN	E-4	2			
	ACFT SGL TURB ENG RPMN	E-4	3	01		
	AH-1G RPMN	E-4	4			
	AIRFRAME RPMN	E-4	4			
	OH-6/OH-58 HEL RPMN	E-4	4			
	MATERIAL SUPPLY SP	E-4	3	01		
	UH-1 RPMN	E-4	5			
	ACFT TURB ENG RPR HLPR	E-3	1	01		
	AH-1G MAINT HELPER	E-3	1			
	AIRFRAME REPAIR HLPR	E-3	2	01		
	CLERK	E-3	1	01		
	OH-6/OH-58 MAINT HLPR	E-3	2			
	UH-1 MAINT HELPER	E-3	2			
	PARA TOTAL		66			
17	REDEYE SEC HQ					
	REDEYE SEC LDR	LT	1			
	SECTION SERGEANT	E-6	1	R6	01	
	PARA TOTAL		2			
18	5 REDEYE TEAMS					
	TEAM CHIEF	E-5	5	R6	16	
	REDEYE GUNNER	E-4	5	R6	01	
	PARA TOTAL		10			
	SRC TOTAL		250			
	REMARKS					
R6	REDEYE OPERATIONS					
01	ALSO LIGHT VEH DVR					
07	ALSO INFO NCO					
08	ALSO EDUC NCO					
10	ASLO CAREER CSLR					
16	ARMED W/REVOLVER CAL .38 4" BARREL					
25	ALSO ASST S-4					
95	MUST BE PARACHUTE QUALIFIED					
96	3 FIRST COOKS E5 ASSIGNED TO TEAMS SUPPORTING TOE 17-276 AND 17-278 2 FIRST COOKS ARE ASSIGNED TO TEAM SUPPORTING TOE 17-277					
97	ALSO COMMANDS DS ACFT MAINT PLT					

EQUIPMENT ALLOWANCE		
PARA	DESCRIPTION	LEVEL
02	TROOP HEADQUARTERS	
	BAYONET-KNIFE W/SCABBARD FOR M16A1 RIFLE	226
	LAUNCHER GRENADE 40 MILLIMETER SGLE SHOT RIFLE MTD DTCHBLE	3
	RADIO SET AN/VRC-46	1
	RADIO SET AN/VRC-64	1
	REVOLVER CALIBER .38 4 INCH BARREL	46
	RIFLE 5.56 MILLIMETER	203
	TRAILER CARGO ¼ TON 2 WHEEL	1
	TRAILER CARGO 1½ TON 2 WHEEL	2
	TRUCK CARGO 1¼ TON 6 X 6	2
	TRUCK CARGO 2½ TON 6 X 6 W/WINCH	2
	TRUCK UTILITY ¼ TON	1
	TRUCK WRECKER 5 TON 6 X 6 W/WINCH	1
03	SQDN HQ SECTION	
	RADIO SET AN/GRC-106	1
	RADIO SET AN/VRC-24	5
	RADIO SET AN/VRC-47	7
	RADIO SET CONTROL GROUP AN/GRA-39	4
	RADIO SET CONTROL GROUP AN/GRA-74	4
	TRAILER CARGO ¼ TON 2 WHEEL	4
	TRUCK CARGO 1¼ TON 6 X 6	4
	TRUCK UTILITY ¼ TON 4 X 4	6
04	SQDN COMM PLT HQ	
	RADIO SET AN/VRC-49	1
	TRAILER CARGO ¼ TON 2 WHEEL	1
	TRUCK UTILITY ¼ TON	1
05	RADIO SECTION	
	RADIO TELETYPWRITER SET AN/VSC-2	2
	TRUCK UTILITY ¼ TON 4 X 4	2
06	MSG CEN-WIRE SEC	
	LAUNCHER GRENADE 40 MILLIMETER SGLE SHOT RIFLE MTD DTCHBLE	2
	SWITCHBOARD TELEPHONE MANUAL SB-22/PT	2
	TELEPHONE SET TA-312/PT	12
	TRUCK CARGO 1¼ TON 6 X 6	1
07	SQDN SPT PLT HQ	
	LAUNCHER GRENADE 40 MILLIMETER SGLE SHOT RIFLE MTD DTCHBLE	1
	RADIO SET AN/VRC-47	1
	TRUCK UTILITY ¼ TON 4 X 4	1
08	TRANSPORTATION SEC	
	MACHINE GUN CALIBER .50 HB FLEXIBLE FOR GROUND USE	3
	MOUNT GUN RING CAL .50	3
	MOUNT TRIPOD MACHINE GUN HEAVY CALIBER 50	3
	TANK AND PUMP UNIT LIQUID DISPENSING TRUCKMOUNTING	3
	TANK UNIT LIQUID DISPENSING TRAILER MOUNTED	3
	TRAILER CARGO 1½ TON 2 WHEEL	8
	TRUCK CARGO 2½ TON 6 X 6	5
	TRUCK CARGO 2½ TON 6 X 6 W/WINCH	3
	TRUCK LIFT FOR DSL DRVN 6000 LB CAP ROUGH TERRAIN	1

PARA	DESCRIPTION	LEVEL
09	SQDN SUPPLY SECTION	
	LAUNCHER GRENADE 40 MILLIMETER SGLE SHOT RIFLE MTD DTCHBLE	2
	MACHINE GUN 7.62 MILLIMETER LIGHT FLEXIBLE	2
	MOUNT TRIPOD MACHINE GUN 7.62 MILLIMETER	2
	TRAILER CARGO 1½ TON 2 WHEEL	2
	TRUCK CARGO 2½ TON 6 X 6	2
10	5 TRP MESS TEAMS	
	LAUNCHER GRENADE 40 MILLIMETER SGLE SHOT RIFLE MTD DTCHBLE	5
	TRAILER TANK WATER 400 GALLON 1½ TON 2 WHEEL	2
	TRUCK CARGO 2½ TON 6 X 6	2
11	SQDN MEDICAL SECTION	
	RADIO SET AN/VRC-64	1
	TRUCK AMBULANCE 1¼ TON 6 X 6	2
	TRUCK CARGO 1¼ TON 6 X 6	1
12	AVIATION PLT HQ	
	LAUNCHER GRENADE 40 MILLIMETER SGLE SHOT RIFLE MTD DTCHBLE	1
	RADIO SET AN/VRC-47	1
	TRUCK UTILITY ¼ TON 4 X 4	1
13	COMD AVN SEC	
	ARMAMENT SUBSYSTEM HELICOPTER 7.62MM MG LIGHT W/O WEAPONS	4
	HELICOPTER UTILITY UH-1H	4
	RADIO SET AN/PRC-90	8
14	AIRCRAFT MAINT SEC	
	LAUNCHER GRENADE 40 MILLIMETER SGLE SHOT RIFLE MTD DTCHBLE	3
	TRAILER CARGO ¼ TON 2 WHEEL	1
	TRAILER CARGO 1½ TON 2 WHEEL	1
	TRANSPORTER AIRMOBILE HYD LIFT FOR SHELTER AND X-4 CONTAINER	1
	TRUCK CARGO 2½ TON 6 X 6	1
	TRUCK UTILITY ¼ TON 4 X 4	1
15	AVIATION SPT SEC	
	LAUNCHER GRENADE 40 MILLIMETER SGLE SHOT RIFLE MTD DTCHBLE	2
	TANK AND PUMP UNIT LIQUID DISPENSING TRUCK MOUNTING	1
	TANK UNIT LIQUID DISPENSING TRAILER MOUNTING	1
	TRAILER CARGO 1½ TON 2 WHEEL	2
	TRUCK CARGO 1¼ TON 6 X 6	1
	TRUCK CARGO 2½ TON 6 X 6	2
16	DS ACFT MAINT PLT	
	RADIO SET AN/VRC-64	4
	TRAILER CARGO ¼ TON 2 WHEEL	1
	TRAILER CARGO 1½ TON 2 WHEEL	4
	TRANSPORTER AIRMOBILE HYD LIFT FOR SHELTERAND X-4 CONTAINER	4
	TRUCK CARGO 1¼ TON 6 X 6	1
	TRUCK CARGO 2½ TON 6 X 6	4
	TRUCK LIFT FORK GAS PT 10000 LB ROUGH	1
	TRUCK UTILITY ¼ TON 4 X 4	1
	TRUCK WRECKER 5 TON 6 X 6 W/WINCH	1
17	REDEY SEC HQ	
	RADIO SET AN/VRC-47	1
	RADIO SET CONTROL GROUP AN/GRA-39	

PARA	DESCRIPTION	LEVEL
18	TRAILER CARGO ¾ TON 2 WHEEL	1
	TRUCK CARGO 1¼ TON 6 X 6	1
	5 REDEYE TEAMS	
	RADIO SET AN/GRC-160	2
	RADIO SET AN/PRC-77	3
	TRAILER CARGO ¼ TON 2 WHEEL	2
	TRUCK UTILITY ¼ TON 4 X 4	2

CAVALRY TROOP
AIR CAVALRY SQUADRON, AIRBORNE DIVISION
Designation: Troop ____, ____, Squadron (Air), ____, Cavalry



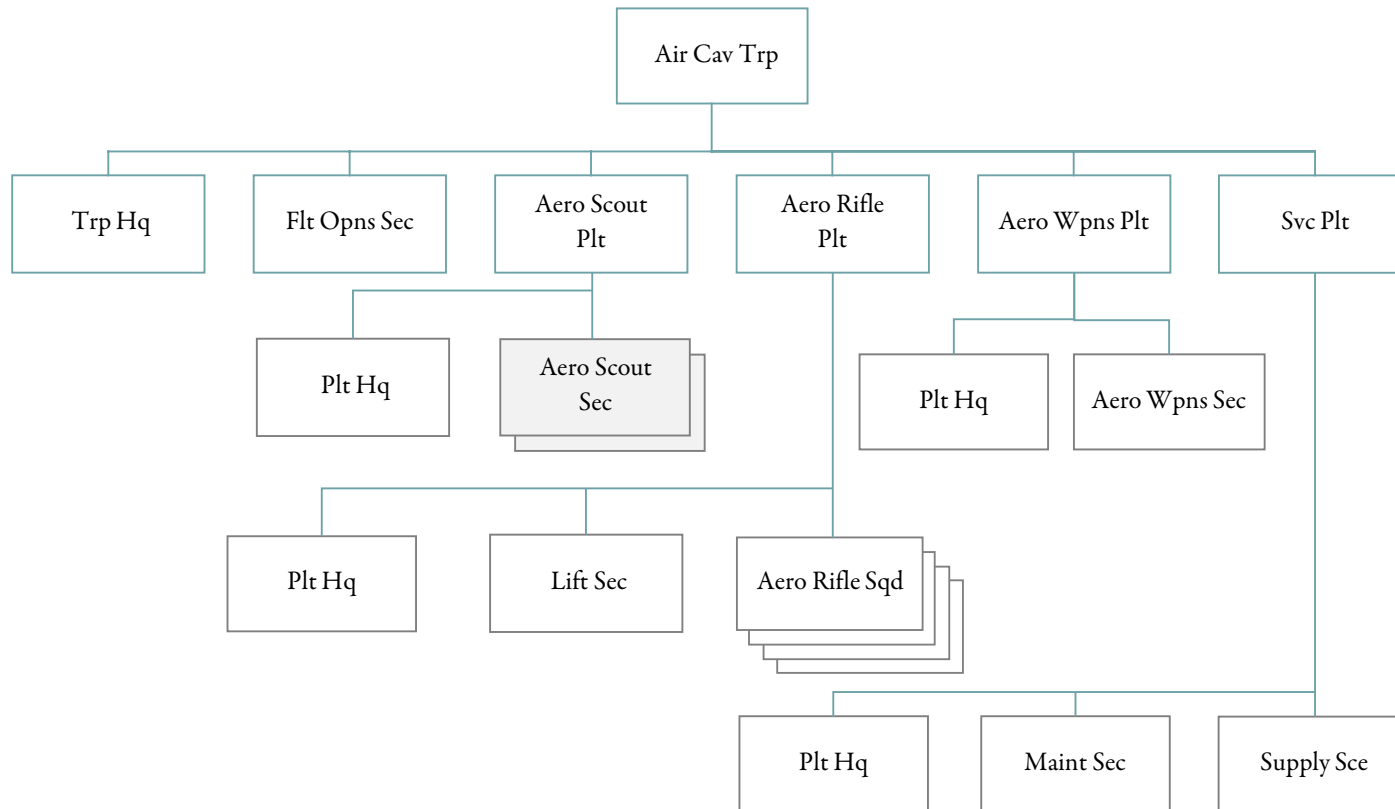
PERSONNEL ALLOWANCES

PARA	DESCRIPTION	GRADE	STRENGTH	REMARKS		
				1	2	3
01	HEADQUARTERS SECTION					
	TROOP COMMANDER	CPT	1	11		
	EXECUTIVE OFFICER	LT	1			
	FIRST SERGEANT	E-8	1	10		
	COMM CHIEF	E-6	1			
	SUPPLY SERGEANT	E-6	1			
	UNIT CLERK	E-5	1			
	ARMORER	E-4	1	01		
	SCOUT DRIVER	E-4	2			
	SR RADIO OPERATOR	E-4	1			
	VOICE RADIO OPERATOR	E-3	1	01		
	PARA TOTAL		11			
02	MAINTENANCE SECTION					
	MOTOR SERGEANT	E-6	1			
	SR WHL VEH MECH	E-5	1			
	FIELD C-E EQUIP MECH	E-4	1			
	GP PWR GEN OP/MECH	E-4	1			
	PLL CLERK	E-4	1			
	WHEELED VEH MECH	E-4	2	01		
	WHEELED VEH MECH HLPR	E-3	1			
	PARA TOTAL		8			
03	3 CAVALRY PLATOON HQ					
	PLATOON LEADER	LT	3			
	PLATOON SERGEANT	E-7	3			
	SCOUT DRIVER	E-4	3			
	PARA TOTAL		9			
04	3 SCOUT SECTIONS					
	SECTION LEADER	E-6	3			
	SQUAD LEADER	E-6	3			
	ASST SQUAD LEADER	E-5	6			
	SCOUT DRIVER	E-4	12			
	SCOUT OBSERVER	E-3	12			
	PARA TOTAL		36			
05	3 ANTI TANK SECTIONS					
	SECTION LEADER	E-6	3	P4		
	SQUAD LEADER	E-5	3	P4		
	GUNNER	E-4	6	P4	11	
	AMMUNITION BEARER	E-3	6	P4	01	
	ASST GUNNER	E-3	6	P4	01	11
	PARA TOTAL		24			
06	3 RIFLE SQUADS					
	SQUAD LEADER	E-6	3			
	TEAM LEADER	E-5	6			
	AUTO RIFLEMAN	E-4	6			
	GRENADIER	E-4	6			
	RIFLEMAN	E-3	9	01		

EQUIPMENT ALLOWANCE		
PARA	DESCRIPTION	LEVEL
01	HEADQUARTERS SECTION	
	BAYONET-KNIFE W/SCABBARD FOR M16A1 RIFLE	133
	LAUNCHER GRENADE 40 MILLIMETER SGLE SHOT RIFLE MTD DTCHBLE	6
	MACHINE GUN 7.62 MILLIMETER LIGHT FLEXIBLE	1
	MOUNT MACHINE GUN PEDESTAL 7.62 MM M60 ON TRUCK M151	1
	MOUNT TRIPOD MACHINE GUN 7.62 MILLIMETER	1
	NIGHT VISION SIGHT INDIVIDUAL SERVEP WEAPON AN/PVS-2	2
	PISTOL CALIBER .45 AUTOMATIC	19
	RADIO SET AN/GRC-106	1
	RADIO SET AN/VRC-47	3
	RADIO SET CONTROL GROUP AN/GRA-39	2
	RIFLE 5.56 MILLIMETER	114
	SWITCHBOARD TELEPHONE MANUAL SB-22/PT	1
	TELEPHONE SET TA-312/PT	5
	TRUCK CARGO 1¼ TON 6 X 6	2
	TRUCK UTILITY ¼ TON 4 X 4	2
02	MAINTENANCE SECTION	
	LAUNCHER GRENADE 40 MILLIMETER SGLE SHOT RIFLE MTD DTCHBLE	3
	RADIO SET AN/VRC-46	1
	TRAILER CARGO 1½ TON 2 WHEEL	1
	TRUCK CARGO 1¼ TON 6 X 6	1
	TRUCK CARGO 2½ TON 6 X 6	1
	3 CAVALRY PLATOON HQ	
	LAUNCHER GRENADE 40 MILLIMETER SGLE SHOT RIFLE MTD DTCHBLE	3
	NIGHT VISION SIGHT TRIPOD MOUNTED AN/TVS-4	3
	RADIO SET AN/VRC-47	3
	TRUCK UTILITY ¼ TON 4 X 4	3
04	3 SCOUT SECTIONS	
	LAUNCHER GRENADE 40 MILLIMETER SGLE SHOT RIFLE MTD DTCHBLE	12
	MACHINE GUN 7.62 MILLIMETER LIGHT FLEXIBLE	12
	MOUNT MACHINE GUN PEDESTAL 7.62MM M60 ON TRUCK M151	12
	MOUNT TRIPOD MACHINE GUN 7.62 MILLIMETER	12
	NIGHT VISION SIGHT INDIVIDUAL SERVEP WEAPON AN/PVS-2	12
	RADIO SET AN/GRC-160	6
	RADIO SET AN/VRC-46	6
	TRUCK UTILITY ¼ TON 4 X 4	12
05	3 ANTI TANK SECTIONS	
	LAUNCHER GRENADE 40 MILLIMETER SGLE SHOT RIFLE MTD DTCHBLE	6
	LAUNCHER TUBULAR GUIDED MISSILE (TOW)	6
	RADIO SEET AN/GRC-160	6
	TRUCK GUIDED MISSILE (TOW)	6
	TRUCK GUIDED MISSILE EQUIPMENT JEEP (TOW)	6
	NIGHT SIGHT TOW MISSILE SYSTEM	6
06	3 RIFLE SQUADS	
	BIPOD RIFLE 5.56 MILLIMETER W/CARRYING CASE F/M16A1 RIFLE	6
	DEMOLITION SET EXPLOSIVE INITIATING NON ELECTRIC	3
	LAUNCHER GRENADE 40 MILLIMETER SGLE SHOT RIFLE MTD DTCHBLE	6
	LAUNCHER ROCKET 66MM 4-TUBE	3

PARA	DESCRIPTION	LEVEL
	MACHINE GUN 7.62 MILLIMETER LIGHT FLEXIBLE	3
	MOUNT TRIPOD MACHINE GUN 7.62 MILLIMETER	3
	NIGHT VISION SIGHT INDIVIDUAL SERVEP WEAPON AN/OVS-2	6
	RADIO SET AN/GRC-160	3
	RADIO SET AN/PRC-77	3
	TRUCK CARGO 1¼ TON 6 X 6	3
07	3 MORTAR SQUADS	
	LAUNCHER GRENADE 40 MILLIMETER SGLE SHOT RIFLE MTD DTCHBLE	3
	MORTAR 81 MILLIMETER ON MOUNT	3
	RADIO SET AN/GRC-160	3
	TRAILER CARGO ¼ TON 2 WHEEL	3
	TRUCK UTILITY ¼ TON 4 X 4	3

AIR CAVALRY TROOP
AIR CAVALRY SQUADRON, AIRBORNE DIVISION
Designation: Troop ____ (Air), ____ Squadron (Air), ____ Cavalry



PERSONNEL ALLOWANCES

PARA	DESCRIPTION	GRADE	STRENGTH	REMARKS		
				1	2	3
01	TROOP HEADQUARTERS					
	TROOP COMMANDER	MAJ	1	16		
	EXECUTIVE OFFICER	CPT	1	16		
	RW INST EXAM	WO	1	16		
	FIRST SERGEANT	E-8	1	10		
	UH-1 CREW CHIEF	E-5	1	16		
	UNIT CLERK	E-5	1	01		
	PARA TOTAL		6			
02	FLIGHT OPERATIONS SEC					
	FLIGHT OPNS OFFICER	CPT	1	16		
	OPNS SGT	E-7	1			
	COMM CHIEF	E-6	1			
	FLT OPNS SP	E-4	1			
	SR FIELD SWBD OP	E-4	1			
	SR RADIO OPERATOR	E-4	1	01		
	RADIO OPERATOR	E-3	1	01		
	PARA TOTAL		7			
03	AERO SCOUT PLAT HQ					
	PLATOON COMMANDER	CPT	1	16		
	PLATOON SERGEANT	E-7	1	16	96	
	OH-6/OH-58 CREW CHIEF	E-5	1	16		
	PARA TOTAL		3			
04	2 AERO SCOUT SECS					
	SECTION COMMANDER	LT	2	16		
	TEAM LEADER	LT	2	16		
	HELICOPTER PILOT	WO	3	16		
	RW FLT SFTY TECH	WO	1	16		
	RW INSTR PILOT	WO	1	16		
	OH-6/OH-58 CREW CHIEF	E-5	9	16	96	
	PARA TOTAL		18			
05	AERO RIFLE PLATOON HQ					
	PLATOON COMMANDER	CPT	1	16		
	PLATOON LEADER	LT	1			
	PLATOON SERGEANT	E-7	1			
	RADIO TEL OP	E-3	1			
	PARA TOTAL		4			
06	LIFT SECTION					
	SECTION COMMANDER	LT	1	16		
	HELICOPTER PILOT	WO	7	16		
	RW INSTR PILOT	WO	1	16		
	SECTION CHIEF	E-6	1	16	97	
	UH-1 CREW CHIEF	E-5	4	16		
	PARA TOTAL		14			
07	4 AERO RIFLE SQUADS					
	SQUAD LEADER	E-6	4			
	TEAM LEADER	E-5	8			

PARA	DESCRIPTION	GRADE	STRENGTH	REMARKS		
				1	2	3
	AUTO RIFLEMAN	E-4	8	13		
	GRENADIER	E-4	8			
	RIFLEMAN	E-3	12			
	PARA TOTAL		40			
08	AERO WEAPONS PLAT HQ					
	PLATOON COMMANDER	CPT	1	16		
	RW INSTR PILOT	WO	1	16		
	PLATOON SERGEANT	E-7	1			
	AH-1G CREW CHIEF	E-5	1			
	PARA TOTAL		4			
09	2 AERO WEAPONS SECS					
	SECTION COMMANDER	LT	2	16		
	TEAM LEADER	LT	2	16		
	HELICOPTER PILOT	WO	12	16		
	AH-1G CREW CHIEF	E-5	8			
	PARA TOTAL		24			
10	SERVICE PLATOON HQ					
	PLATOON COMMANDER	CPT	1	16		
11	MAINTENANCE SECTION					
	ACFT MAINT TECHNICIAN	WO	1	16		
	HELICOPTER PILOT	WO	1	16		
	ACFT ARMAMENT SUPV	E-7	1			
	MAINT SUPV	E-7	1			
	MOTOR SERGEANT	E-6	1			
	AH-1G TECH INSP	E-6	1	16		
	OH-6/OH-58 TECH INSP	E-6	1	16		
	UH-1 TECH INSPECTOR	E-6	1	16		
	ACFT REPAIR PARTS SP	E-5	1			
	SR ACFT ARMAMENT MECH	E-5	6			
	SR AH-1G RPMN	E-5	2			
	SR AVIONICS MECHANIC	E-5	2			
	SR UH-1 RPMN	E-5	2			
	UH-1 CREW CHIEF	E-5	1	16		
	MATERIAL SUPPLY SP	E-4	3			
	AH-1G RPMN	E-4	3			
	AIRCRAFT ARMT MECH	E-4	7			
	AVIONICS MECHANIC	E-4	3			
	FIELD C-E EQUIP MECH	E-4	1	01		
	GP POWER GEN OP/MECH	E-4	1	01		
	PLL CLERK	E-4	1			
	UH-1 RPMN	E-4	2			
	WHEEL VEH MECH	E-4	2	01		
	AH-1G MAINT HLPR	E-3	1	01		
	PWR GEN EQUIP HLPR	E-3	1	01		
	UH-1 MAINT HLPR	E-3	1	01		
	WHEEL VEH MECH HLPR	E-3	1			
	PARA TOTAL		49			
12	SUPPLY SECTION					

PARA	DESCRIPTION	GRADE	STRENGTH	REMARKS		
				1	2	3
	SECTION CHIEF	WO	1	16		
	SUPPLY SERGEANT	E-6	1			
	AFLD SER SUPV	E-5	1			
	UH-1 CREW CHIEF	E-5	1	16		
	ACFT FUELS HAND SP	E-4	4	01		
	AMMO STORAGE SP	E-4	2	01		
	ARMORER	E-4	1	01		
	AIRFIELD SERVICEMAN	E-3	2	01		
	SUPPLY CLERK	E-3	1			
			PARA TOTAL	14		
			SRC TOTAL	184		
	REMARKS					
01	ALSO LIGHT VEHICLE DRIVER					
10	ALSO CAREER COUNSELLER					
16	ARMED WITH REVOLVER CALIBER .38, 4-INCH BARREL					
96	ALSO AERIAL OBSERVER					
97	ALSO UH-1 CREW CHIEF					

EQUIPMENT ALLOWANCE		
PARA	DESCRIPTION	LEVEL
01	TROOP HEADQUARTERS	
	ARMAMENT SUBSYSTEM HELICOPTER 7.62 MILLIMETER MACHINE GUN LIGHT	1
	HELICOPTER UTILITY UH-1H	1
	LAUNCHER GRENADE 40 MILLIMETER SGLE SHOT RIFLE MTD DTCHBLE	1
	MACHINE GUN CALIBER .50 HB FOR GROUND USE	1
	MOUNT TRIPOD MACHINE GUN HEAVY CALIBER 50	1
	RADIO SET AN/PRC-90	2
	RADIO SET AN/VRC-47	1
	TRAILER CARGO ¼ TON 2 WHEEL	1
	TRUCK UTILITY ¼ TON	1
02	FLIGHT OPERATIONS SEC	
	RADIO SET AN/GRC-106	1
	RADIO SET AN/VRC-47	1
	RADIO SET CONTROL GROUP AN/GRA-74	1
	SWITCHBOARD TELEPHONE MANUAL SB-22/PT	1
	TELEPHONE SET TA-312/PT	8
	TRAILER CARGO ¼ TON 2 WHEEL	1
	TRUCK CARGO 1¼ TON 6 X 6	1
TRUCK UTILITY ¼ TON 4 X 4	1	
03	AERO SCOUT PLAT HQ	
	HELICOPTER OBSERVATION OH-58A	1
	LAUNCHER GRENADE 40 MILLIMETER SGLE SHOT RIFLE MTD DTCHBLE	1
	MACHINE GUN 7.62 MILLIMETER LIGHT FLEXIBLE	1
	RADIO SET AN/PRC-77	1
	RADIO SET AN/PRC-90	1
	RIFLE 5.56 MILLIMETER	1
04	2 AERO SCOUT SECS	
	HELICOPTER OBSERVATION OH-58A	9
	LAUNCHER GRENADE 40 MILLIMETER SGLE SHOT RIFLE MTD DTCHBLE	9
	MACHINE GUN 7.62 MILLIMETER LIGHT FLEXIBLE	9
	RADIO SET AN/PRC-77	2
	RADIO SET AN/PRC-90	9
	RIFLE 5.56 MILLIMETER	9
05	AERO RIFLE PLATOON HQ	
	ARMAMENT SUBSYSTEM HELICOPTER 7.62 MILLIMETER MACHINE GUN LIGHT	5
	BAYONET-KNIFE W/SCABBARD FOR M16A1 RIFLE	17
	HELICOPTER UTILITY UH-1H	5
	RADIO SET AN/PRC-77	5
	RADIO SET AN/URC-10	5
06	LIFT SECTION	
	ARMAMENT SUBSYSTEM HELICOPTER 7.62MM MG LIGHT W/O WEAPONS	5
	HELICOPTER UTILITY UH-1H	5
	RADIO SET AN/PRC-90	10
07	4 AERO RIFLE SQUADS	
	BIPOD RIFLE 5.56 MILLIMETER W/CARRYING CASE F/M16A1 RIFLE	8
	LAUNCHER GRENADE 40 MILLIMETER SGLE SHOT RIFLE MTD DTCHBLE	8
	MACHINE GUN 7.62 MILLIMETER LIGHT FLEXIBLE	4
	MOUNT TRIPOD MACHINE GUN 7.62 MILLIMETER	4

PARA	DESCRIPTION	LEVEL
	NIGHT VISION SIGHT INDIVIDUAL SERVEP WEAPONS AN/PVS-2	8
	RADIO SET AN/PRC-77	4
08	AERO WEAPONS PLAT HQ	
	ARMAMENT SUBSYS HE 7.62MM MG - 40MM GRENADE LNCHR HIGH RATE	1
	BAYONET-KNIFE W/SCABBARD FOR M16A1 RIFLE	4
	HELICOPTER ATTACK AH-1G	1
	LAUNCHER ROCKET AIRCRAFT 2.75 INCH 19 TUBE (REPAIRABLE)	4
	RADIO SET AN/PRC-77	1
	RADIO SET AN/PRC-90	1
09	2 AERO WEAPONS SECS	
	ARMAMENT POD AIRCRAFT 7.62 MACHINE GUN W/O WEAPONS	6
	ARMAMENT SUBSYSTEM HELICOPTER 20MM AUTOMATIC GUN	4
	ARMAMENT SUBSYS HEL 7.62MM MG - 40MM GRENADE LNCHR HIGH RATE	8
	HELICOPTER ATTACK AH-1G	8
	LAUNCHER ROCKET AIRCRAFT 2.75 INCH	12
	LAUNCHER ROCKET AIRCRAFT 2.75 INCH 9 TUBE (REPAIRABLE)	18
	RADIO SET AN/PRC-77	2
	RADIO SET AN/PRC-90	16
11	MAINTENANCE SECTION	
	ARMAMENT SUBSYSTEM HELICOPTER 7.62 MILLIMETER MACHINE GUN LIGHT	1
	HELICOPTER UTILITY UH-1H	1
	MACHINE GUN CALIBER .50 HB FLEXIBLE FOR GROUND USE	2
	MOUNT GUN RING CAL .50	2
	MOUNT TRIPOD MACHINE GUN HEAVY CALIBER 50	2
	RADIO SET AN/PRC-77	1
	RADIO SET AN/PRC-90	2
	RADIO SET AN/VRC-47	1
	TRAILER CARGO ¼ TON 2 WHEEL	1
	TRAILER CARGO 1½ TON 2 WHEEL	2
	TRANSPORTER AIRMOBILE HYD LIFT FOR SHELTER AND X-4 CONTAINER	2
	TRUCK CARGO 2½ TON 6 X 6 W/WINCH	4
	TRUCK UTILITY ¼ TON 4 X 4	1
12	SUPPLY SECTION	
	ARMAMENT SUBSYSTEM HELICOPTER 7.62 MILLIMETER MACHINE GUN LIGHT	1
	BAYONET-KNIFE W/SCABBARD FOR M16A1 RIFLE	184
	HELICOPTER UTILITY UH-1H	1
	MACHINE GUN CALIBER .50 HB FLEXIBLE FOR GROUND USE	3
	MOUNT GUN RING CAL .50	3
	MOUNT TRIPOD MACHINE GUN HEAVY CALIBER 50	3
	RADIO SET AN/PRC-77	2
	RADIO SET AN/PRC-90	2
	REVOLVER CALIBER .38 4 INCH BARREL	68
	RIFLE 5.56 MILLIMETER	116
	TANK AND PUMP UNIT LIQUID DISPENSING TRUCK MOUNTING	4
	TRAILER AMMUNITION 1½ TON 2 WHEEL	2
	TRAILER CARGO 1½ TON 2 WHEEL	1
	TRUCK CARGO 2½ TON 6 X 6	4
	TRUCK CARGO 2½ TON 6 X 6 W/WINCH	3
	TRUCK LIFT FORK DSL DRVN 6000 LB CAP ROUGH TERRAIN	2
	TRUCK PLATFORM UTILITY ½ TON 4 X 4	2