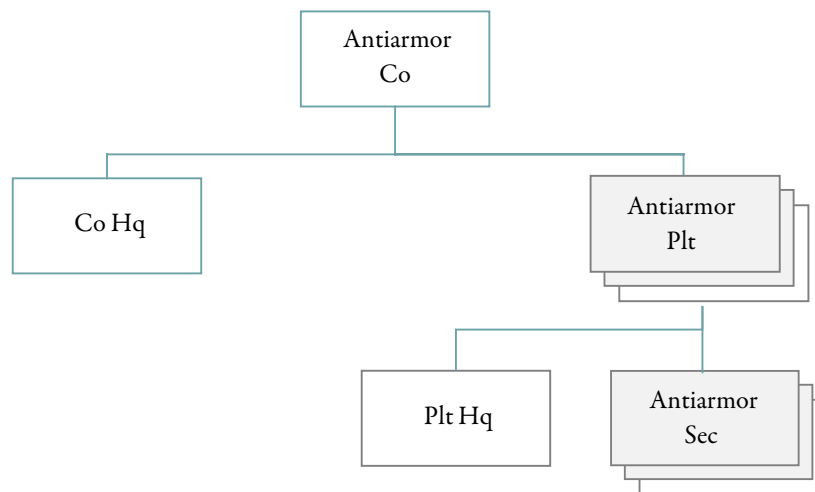


ANTIARMOR COMPANY (SEPARATE)
Designation: Company ____, Infantry (Antiarmor)



PERSONNEL ALLOWANCES

PARA	DESCRIPTION	GRADE	STRENGTH	REMARKS		
				1	2	3
01	COMPANY HEADQUARTERS					
	COMPANY COMMANDER	CPT	1	11		
	EXECUTIVE OFFICER	LT	1	26		
	FIRST SERGEANT	E-6	1	P4	10	
	COMMUNICATIONS CHIEF	E-6	1			
	MOTOR SERGEANT	E-6	1			
	OPERATIONS SERGEANT	E-6	1	P4	07	
	SUPPLY SERGEANT	E-6	1			
	WHEEL VEHICLE MECH	E-5	1			
	COMPANY AIDMAN	E-5	2	11		
	COOK	E-5	1			
	ARMORER	E-4	1	01		
	COMPANY AIDMAN	E-4	2	11		
	COOK	E-4	2			
	EQUIPMENT MAINT CLERK	E-4	1			
	FIELD C-E EQUIP MECH	E-4	1			
	UNIT CLERK	E-4	1			
	WHEEL VEHICLE MECH	E-4	2			
	RADIO TELEPHONE OP	E-3	1	01		
	WHEEL VEHICLE MECH	E-3	2	01		
	PARA TOTAL		24			
02	3 ANTIARMOR PLT HQ					
	PLATOON LEADER	LT	3			
	PLATOON SERGEANT	E-7	3	P4		
	RADIO TELEPHONE OP	E-3	6	01		
	PARA TOTAL		12			
03	9 ANTIARMOR SECTIONS					
	SECTION SERGEANT	E-6	9	P4	91	
	SQUAD LEADER	E-5	9	P4		
	GUNNER	E-4	18	P4	11	
	AMMUNITION CARRIER	E-3	18	P4	01	
	ASSISTANT GUNNER	E-3	18	P4	01	11
	PARA TOTAL		72			
	SRC TOTAL		108			
	REMARKS					
P4	TOW QUALIFIED					
01	ALSO LIGHT VEHICLE DRIVER					
07	ALSO INFORMATION NCO					
10	ALSO CAREER COUNSELOR					
11	ARMED WITH PISTOL AUTO CAL .45					
26	ALSO GEN EDUC DEV OFFICER					
91	ALSO ACTS AS SQUAD LEADER					

EQUIPMENT ALLOWANCE

PARA	DESCRIPTION	LEVEL
01	COMPANY HEADQUARTERS	
	BAYONET-KNIFE W/SCABBARD FOR M16A1 RIFLE	104
	NIGHT VISION GOGGLES AN/PVS-5	2
	PISTOL CALIBER .45 AUTOMATIC	41
	RADIO SET AN/VRC-47	1
	RADIO SET CONTROL GROUP AN/GRA-39	1
	RIFLE 5.56 MILLIMETER	67
	SWITCHBOARD TELEPHONE MANUAL SB-22/PT	1
	TELEPHONE SET TA-312/PT	2
	TRAILER CARGO ¼ TON 2 WHEEL	1
	TRUCK CARGO 1¼ TON 6 X 6	2
	TRUCK UTILITY ¼ TON	1
02	3 ANTIARMOR PLT HQ	
	NIGHT VISION GOGGLES AN/PVS-5	6
	RADIO SET AN/GRC-160	3
	RADIO SET AN/VRC-47	3
	RADIO SET CONTROL GROUP AN/GRA-39	3
	SWITCHBOARD TELEPHONE MANUAL SB-993/GT	3
	TELEPHONE SET TA-312/PT	3
	TRAILER CARGO ¼ TON 2 WHEEL	6
	TRUCK UTILITY ¼ TON 4 X 4	6
03	9 ANTIARMOR SECTIONS	
	LAUNCHER TUBULAR GUIDED MISSILE (TOW)	18
	NIGHT VISION GOGGLES AN/PVS-5	36
	RADIO SET AN/GRC-160	18
	RADIO SET AN/PRC-77	18
	TRAILER CARGO ¼ TON 2 WHEEL	18
	TRUCK GUIDED MISSILE (TOW)	18
	TRUCK GUIDED MISSILE EQUIPMENT JEEP (TOW)	18